

# MCM4 IHC Antibody

Goat Polyclonal

Antigen Affinity Purified

Protein ID NP\_005905.2

Catalog No. IHC-00038

GeneID 4173

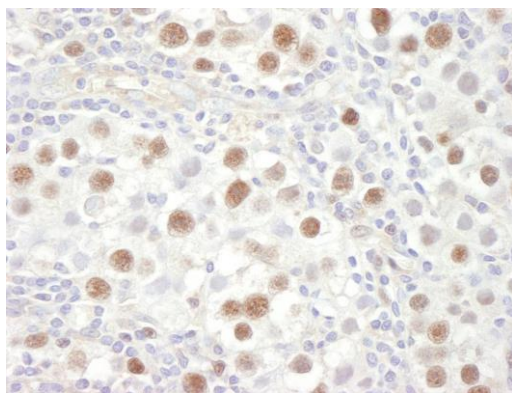
Lot No. IHC-00038-1



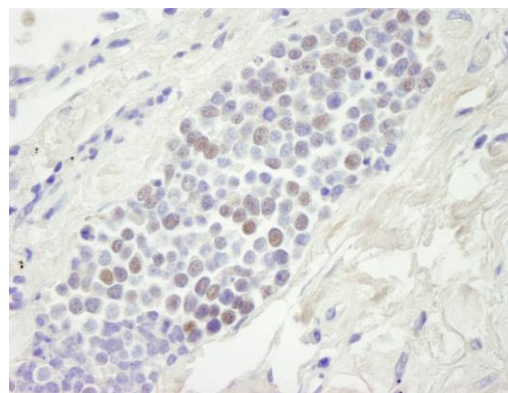
<b>APPLICATIONS</b>	IHC
<b>SPECIES REACTIVITY</b>	Human
<b>PRESUMED REACTIVITY</b>	Based on 100% sequence identity, this antibody is predicted to react with Rabbit, Guinea pig_10141, Orangutan, Monkey, Gorilla, Chimpanzee, Northern white-cheeked gibbon and Naked mole rat
<b>AMOUNT</b>	100 µl
<b>CONCENTRATION</b>	500 µg/ml
<b>STORAGE/SHELF LIFE</b>	2 – 8° C / 1 year from date of receipt
<b>PHYSICAL STATE</b>	Liquid
<b>BUFFER</b>	Tris-buffered Saline containing 0.1% BSA and 0.09% Sodium Azide
<b>ISOTYPE</b>	IgG
<b>ORIGIN</b>	USA
<b>PRODUCTION PROCEDURES</b>	Antibody was affinity purified using an epitope specific to MCM4 immobilized on solid support.  The epitope recognized by IHC-00038 maps to a region between residue 325 and 375 of human Minichromosome Maintenance 4 using the numbering given in entry NP_005905.2 (GeneID 4173).
<b>APPLICATIONS</b>	Centrifuge tube to remove product from lid. Optimal working dilutions should be determined experimentally by the investigator. Prepare working dilution immediately before use.  Immunohistochemistry 1:100 – 1:500
<b>APPLICATION NOTES</b>	Epitope exposure is recommended.  Epitope exposure with citrate buffer will enhance staining.  Likely to work with frozen sections.
<b>IHC HUMAN CONTROLS</b>	In some cases, the antibody may be diluted further than indicated. Breast Carcinoma, Colon Carcinoma, Non-Small Cell Lung Cancer, Ovarian Carcinoma, Small Cell Lung Cancer, Testicular Seminoma
<b>ADDITIONAL INFO</b>	<a href="https://www.bethyl.com/product/IHC-00038">https://www.bethyl.com/product/IHC-00038</a> Use the link above to view SDS, a current list of citations, and other product specific information.

This document certifies that this product has met all of the quality control standards defined by Bethyl Laboratories, Inc.  
Eric McIntush, PhD | Chief Scientific Officer

Date: June 21, 2019



**Detection of human MCM4 by immunohistochemistry.**  
*Sample:* FFPE section of human seminoma. *Antibody:* Affinity purified goat anti-MCM4 (Cat. No. IHC-00038) used at a dilution of 1:250. *Detection:* DAB



**Detection of human MCM4 by immunohistochemistry.**  
*Sample:* FFPE section of human small cell lung carcinoma. *Antibody:* Affinity purified goat anti-MCM4 (Cat. No. IHC-00038) used at a dilution of 1:250. *Detection:* DAB