

MCM3 IHC Antibody

Goat Polyclonal

Antigen Affinity Purified

Protein ID NP_002379.2

Catalog No. IHC-00037

GeneID 4172

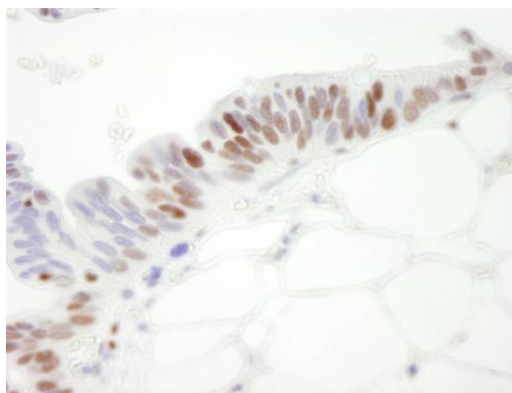
Lot No. IHC-00037-1



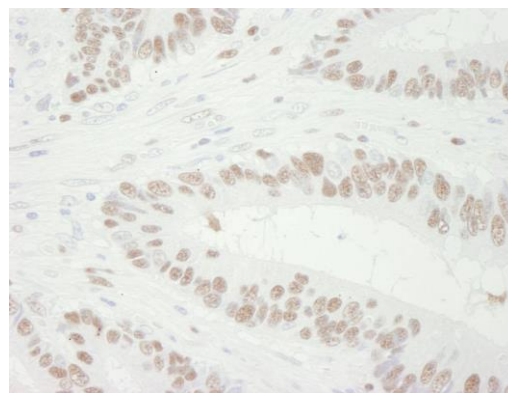
APPLICATIONS	IHC
SPECIES REACTIVITY	Human
PRESUMED REACTIVITY	Based on 100% sequence identity, this antibody is predicted to react with Horse, Pig, Orangutan, Monkey, Gorilla, Chimpanzee, Northern white-cheeked gibbon and Crab-eating macaque
AMOUNT	100 µl
CONCENTRATION	500 µg/ml
STORAGE/SHELF LIFE	2 – 8° C / 1 year from date of receipt
PHYSICAL STATE	Liquid
BUFFER	Tris-buffered Saline containing 0.1% BSA and 0.09% Sodium Azide
ISOTYPE	IgG
ORIGIN	USA
PRODUCTION PROCEDURES	<p>Antibody was affinity purified using an epitope specific to MCM3 immobilized on solid support.</p> <p>The epitope recognized by IHC-00037 maps to a region between residues 500 and 550 of human Minichromosome Maintenance 3 using the numbering given in entry NP_002379.2 (GeneID 4172).</p> <p>Antibody concentration was determined by extinction coefficient: absorbance at 280 nm of 1.4 equals 1.0 mg of IgG.</p>
APPLICATIONS	<p>Centrifuge tube to remove product from lid. Optimal working dilutions should be determined experimentally by the investigator. Prepare working dilution immediately before use.</p> <p>Immunohistochemistry 1:100 – 1:500</p>
APPLICATION NOTES	<p>Epitope exposure is recommended.</p> <p>Epitope exposure with citrate buffer will enhance staining.</p> <p>Likely to work with frozen sections.</p>
IHC HUMAN CONTROLS	<p>In some cases, the antibody may be diluted further than indicated.</p> <p>Breast Carcinoma, Colon Carcinoma, Non-Small Cell Lung Cancer, Ovarian Carcinoma, Small Cell Lung Cancer</p>
ADDITIONAL INFO	<p>https://www.bethyl.com/product/IHC-00037</p> <p>Use the link above to view SDS, a current list of citations, and other product specific information.</p>

This document certifies that this product has met all of the quality control standards defined by Bethyl Laboratories, Inc.
Eric McIntush, PhD | Chief Scientific Officer

Date: June 21, 2019



Detection of human MCM3 by immunohistochemistry.
Sample: FFPE section of human ovarian tumor. *Antibody:* Affinity purified goat anti-MCM3 (Cat. No. IHC-00037) used at a dilution of 1:250. *Detection:* DAB



Detection of human MCM3 by immunohistochemistry.
Sample: FFPE section of human colon adenocarcinoma. *Antibody:* Affinity purified goat anti-MCM3 (Cat. No. IHC-00037) used at a dilution of 1:250. *Detection:* DAB