

CDK11 IHC Antibody

Rabbit Polyclonal

Antigen Affinity Purified

Protein ID Q9UQ88

Catalog No. IHC-00035

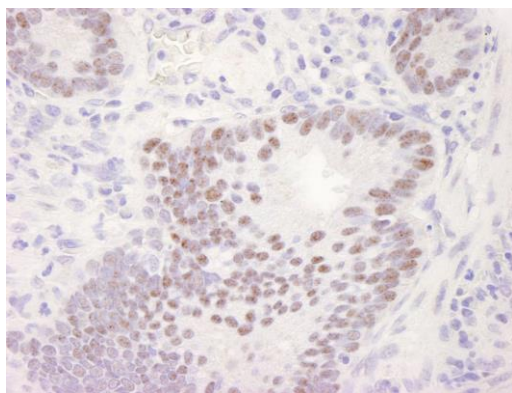
GeneID 728642

Lot No. IHC-00035-1

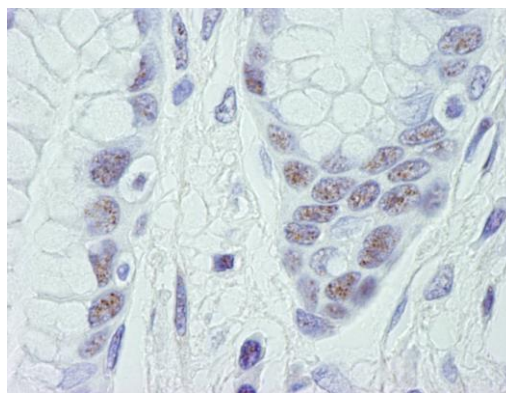


| | |
|------------------------------|------------------------------------------------------------------------------------------------------------------------------------------------------------------------------------------------------------------------------------------------------------------------------------------------------------------------------------------------------------------------------------------------------------------------|
| APPLICATIONS | IHC |
| SPECIES REACTIVITY | Human |
| PRESUMED REACTIVITY | Based on 100% sequence identity, this antibody is predicted to react with Mouse, Rat, <i>X. laevis</i> , <i>X. tropicalis</i> , Chicken, Turkey, Bovine, Dog, Horse, Rabbit, Guinea pig_10141, Pig, Panda and Orangutan |
| AMOUNT | 100 µl |
| CONCENTRATION | 500 µg/ml |
| STORAGE/SHELF LIFE | 2 – 8° C / 1 year from date of receipt |
| PHYSICAL STATE | Liquid |
| BUFFER | Tris-buffered Saline containing 0.1% BSA and 0.09% Sodium Azide |
| ISOTYPE | IgG |
| ORIGIN | USA |
| PRODUCTION PROCEDURES | <p>Antibody was affinity purified using an epitope specific to CDK11 immobilized on solid support.</p> <p>The epitope recognized by IHC-00035 maps to a region between residue 730 and the C-terminus (residue 780) of human Cell Division Cycle 2-like 2 using the numbering given in SwissProt entry Q9UQ88 (GeneID 728642). The epitope that is recognized by IHC-00035 is also found in CDC11L1 (Gene ID 984).</p> |
| APPLICATIONS | <p>Centrifuge tube to remove product from lid. Optimal working dilutions should be determined experimentally by the investigator. Prepare working dilution immediately before use.</p> <p>Immunohistochemistry 1:100 – 1:500</p> |
| APPLICATION NOTES | <p>Epitope exposure is recommended.</p> <p>Epitope exposure with citrate buffer will enhance staining.</p> <p>Likely to work with frozen sections.</p> <p>In some cases, the antibody may be diluted further than indicated.</p> |
| IHC HUMAN CONTROLS | Linitis Plastica Stomach Cancer, Stomach Adenocarcinoma |
| ADDITIONAL INFO | <p>https://www.bethyl.com/product/IHC-00035</p> <p>Use the link above to view SDS, a current list of citations, and other product specific information.</p> |

This document certifies that this product has met all of the quality control standards defined by Bethyl Laboratories, Inc.
Eric McIntush, PhD | Chief Scientific Officer Date: June 21, 2019



Detection of human CDK11 by immunohistochemistry.
Sample: FFPE section of human stomach adenocarcinoma.
Antibody: Affinity purified rabbit anti-CDK11 (Cat. No. IHC-00035) used at a dilution of 1:250. *Detection:* DAB



Detection of human CDK11 by immunohistochemistry.
Sample: FFPE section of human stomach adenocarcinoma.
Antibody: Affinity purified rabbit anti-CDK11 (Cat. No. IHC-00035) used at a dilution of 1:250. *Detection:* DAB