

ATM IHC Antibody

Rabbit Polyclonal

Antigen Affinity Purified

Protein ID Q13315

Catalog No. IHC-00034

GeneID 472

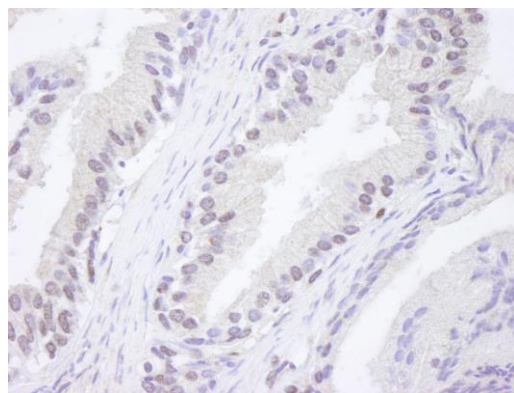
Lot No. IHC-00034-1



APPLICATIONS	IHC
SPECIES REACTIVITY	Human
PRESUMED REACTIVITY	Based on 100% sequence identity, this antibody is predicted to react with Chimpanzee
AMOUNT	100 µl
CONCENTRATION	250 µg/ml
STORAGE/SHELF LIFE	2 – 8° C / 1 year from date of receipt
PHYSICAL STATE	Liquid
BUFFER	Tris-buffered Saline containing 0.1% BSA and 0.09% Sodium Azide
ISOTYPE	IgG
ORIGIN	USA
PRODUCTION PROCEDURES	<p>Antibody was affinity purified using an epitope specific to ATM immobilized on solid support.</p> <p>The epitope recognized by IHC-00034 maps to a region between residue 2550 and 2600 of human ataxia telangiectasia mutated using the numbering given in SwissProt entry Q13315 (GeneID 472).</p>
APPLICATIONS	<p>Centrifuge tube to remove product from lid. Optimal working dilutions should be determined experimentally by the investigator. Prepare working dilution immediately before use.</p> <p>Immunohistochemistry 1:100 – 1:500</p>
APPLICATION NOTES	<p>Epitope exposure is NOT recommended.</p> <p>Epitope exposure with citrate buffer will hinder staining.</p> <p>Likely to work with frozen sections.</p> <p>In some cases, the antibody may be diluted further than indicated.</p>
IHC HUMAN CONTROLS	Hodgkins Lymphoma, Prostate Carcinoma
ADDITIONAL INFO	<p>https://www.bethyl.com/product/IHC-00034</p> <p>Use the link above to view SDS, a current list of citations, and other product specific information.</p>

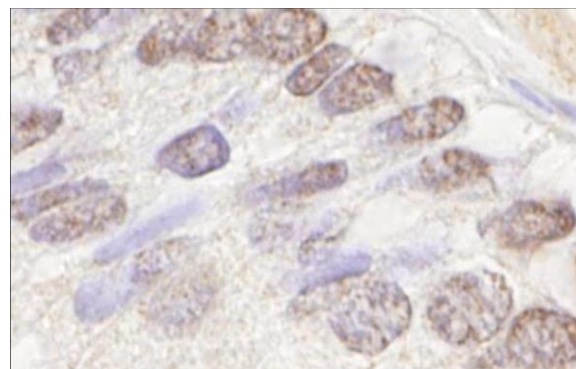
This document certifies that this product has met all of the quality control standards defined by Bethyl Laboratories, Inc.
Eric McIntush, PhD | Chief Scientific Officer

Date: June 21, 2019

**Detection of human ATM by immunohistochemistry.**

Sample: FFPE section of human prostate (nodular hypertrophy). *Antibody:* Affinity purified rabbit anti-ATM (Cat. No. IHC-00034) used at a dilution of 1:250.

Detection: DAB

**Detection of human ATM by immunohistochemistry.**

Sample: FFPE section of human prostate (nodular hypertrophy). *Antibody:* Affinity purified rabbit anti-ATM (Cat. No. IHC-00034) used at a dilution of 1:250.

Detection: DAB