

ErbB2 IHC Antibody

Rabbit Polyclonal

Antigen Affinity Purified

Protein ID NP_004439.2

Catalog No. IHC-00032

GeneID 2064

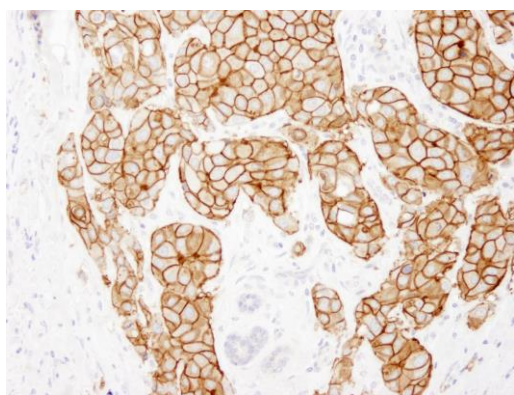
Lot No. IHC-00032-1



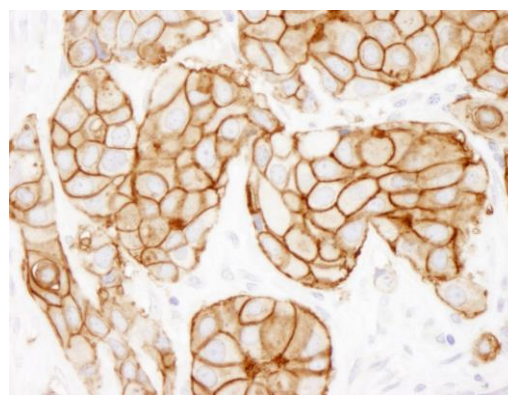
APPLICATIONS	IHC, IHC-IF
SPECIES REACTIVITY	Human
PRESUMED REACTIVITY	Based on 100% sequence identity, this antibody is predicted to react with Mouse, Rat, Dog, Horse, Rabbit, Pig, Golden hamster, Panda, Cat, Orangutan, Monkey, Gorilla, Chimpanzee and Chinese hamster
AMOUNT	100 µl
CONCENTRATION	250 µg/ml
STORAGE/SHELF LIFE	2 – 8° C / 1 year from date of receipt
PHYSICAL STATE	Liquid
BUFFER	Tris-buffered Saline containing 0.1% BSA and 0.09% Sodium Azide
ISOTYPE	IgG
ORIGIN	USA
PRODUCTION PROCEDURES	Antibody was affinity purified using an epitope specific to ErbB2 immobilized on solid support. The epitope recognized by IHC-00032 maps to a region between residue 1200 and the C-terminus (residue 1255) of human v-erb-b2 erythroblastic leukemia viral oncogene homolog 2 using the numbering given in entry NP_004439.2 (GeneID 2064).
APPLICATIONS	Centrifuge tube to remove product from lid. Optimal working dilutions should be determined experimentally by the investigator. Prepare working dilution immediately before use. Immunohistochemistry 1:100 – 1:500 Immunofluorescence 1:50 – 1:500 (IHC)
APPLICATION NOTES	Epitope exposure is recommended. Epitope exposure with citrate buffer or tris-EDTA (pH9.0) will enhance staining. Likely to work with frozen sections. In some cases, the antibody may be diluted further than indicated.
IHC HUMAN CONTROLS	Breast Carcinoma
ADDITIONAL INFO	https://www.bethyl.com/product/IHC-00032 Use the link above to view SDS, a current list of citations, and other product specific information.

This document certifies that this product has met all of the quality control standards defined by Bethyl Laboratories, Inc.
Eric McIntush, PhD | Chief Scientific Officer

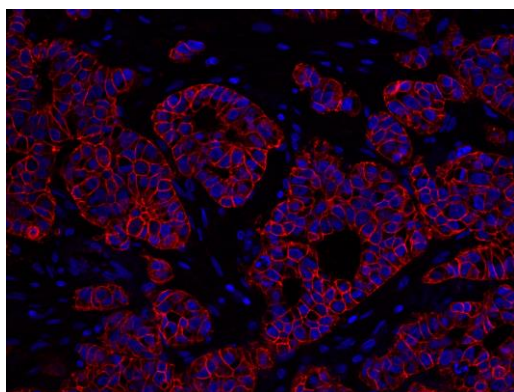
Date: June 21, 2019



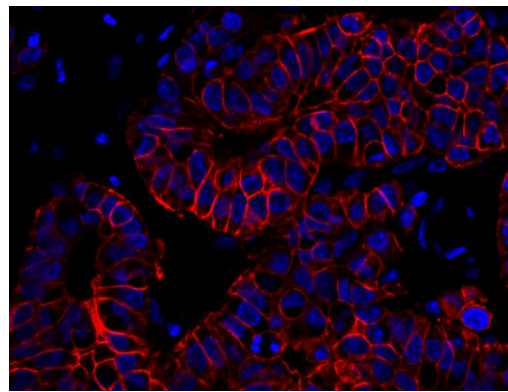
Detection of human ErbB2 by immunohistochemistry.
Sample: FFPE section of human breast adenocarcinoma.
Antibody: Affinity purified rabbit anti-ErbB2 (Cat. No. IHC-00032) used at a dilution of 1:250. *Detection:* DAB



Detection of human ErbB2 by immunohistochemistry.
Sample: FFPE section of human breast adenocarcinoma.
Antibody: Affinity purified rabbit anti-ErbB2 (Cat. No. IHC-00032) used at a dilution of 1:250. *Detection:* DAB



Detection of human ErbB2 by immunofluorescence.
Sample: FFPE section of human breast carcinoma.
Antibody: Affinity purified rabbit anti-ErbB2 (Cat. No. IHC-00032) used at a dilution of 1:100. *Detection:* Red-fluorescent goat anti-rabbit IgG highly cross-adsorbed Antibody.



Detection of human ErbB2 by immunofluorescence.
Sample: FFPE section of human breast carcinoma.
Antibody: Affinity purified rabbit anti-ErbB2 (Cat. No. IHC-00032) used at a dilution of 1:100. *Detection:* Red-fluorescent goat anti-rabbit IgG highly cross-adsorbed antibody.