

NCOA2/SRC2 IHC Antibody

Rabbit Polyclonal

Antigen Affinity Purified

Protein ID NP_006531.1

Catalog No. IHC-00030

GeneID 10499

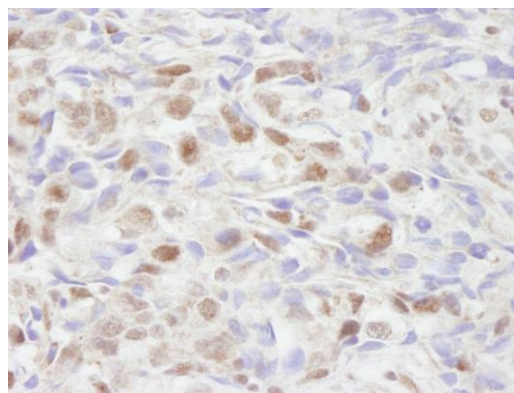
Lot No. IHC-00030-1



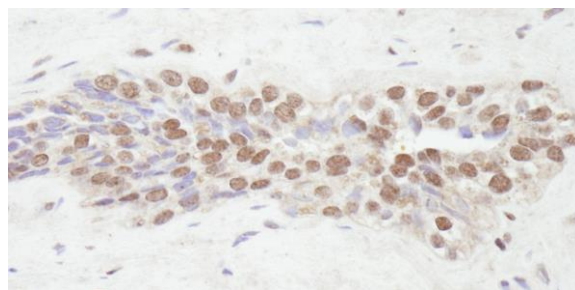
APPLICATIONS	IHC
SPECIES REACTIVITY	Human
PRESUMED REACTIVITY	Based on 100% sequence identity, this antibody is predicted to react with Monkey, Gorilla, Chimpanzee, Northern white-cheeked gibbon and White-tufted-ear marmoset
AMOUNT	100 µl
CONCENTRATION	250 µg/ml
STORAGE/SHELF LIFE	2 – 8° C / 1 year from date of receipt
PHYSICAL STATE	Liquid
BUFFER	Tris-buffered Saline containing 0.1% BSA and 0.09% Sodium Azide
ISOTYPE	IgG
ORIGIN	USA
PRODUCTION PROCEDURES	Antibody was affinity purified using an epitope specific to NCOA2/SRC2 immobilized on solid support. The epitope recognized by IHC-00030 maps to a region between residue 1400 and the C-terminus (residue 1464) of human Nuclear Receptor Coactivator 2 using the numbering given in entry NP_006531.1 (GeneID 10499).
APPLICATIONS	Centrifuge tube to remove product from lid. Optimal working dilutions should be determined experimentally by the investigator. Prepare working dilution immediately before use. Immunohistochemistry 1:100 – 1:500
APPLICATION NOTES	Epitope exposure is recommended. Epitope exposure with citrate buffer will enhance staining. likely to work with frozen sections.
IHC HUMAN CONTROLS	In some cases, the antibody may be diluted further than indicated. Breast Carcinoma, Prostate Carcinoma, Testicular Seminoma
ADDITIONAL INFO	https://www.bethyl.com/product/IHC-00030 Use the link above to view SDS, a current list of citations, and other product specific information.

This document certifies that this product has met all of the quality control standards defined by Bethyl Laboratories, Inc.
Eric McIntush, PhD | Chief Scientific Officer

Date: June 21, 2019



Detection of human NCOA2/SRC2 by immunohistochemistry. *Sample:* FFPE section of human breast adenocarcinoma. *Antibody:* Affinity purified rabbit anti-NCOA2/SRC2 (Cat. No. IHC-00030) used at a dilution of 1:250. *Detection:* DAB



Detection of human NCOA2/SRC2 by immunohistochemistry. *Sample:* FFPE section of prostate adenocarcinoma. *Antibody:* Affinity purified rabbit anti-NCOA2/SRC2 (Cat. No. IHC-00030) used at a dilution of 1:100. *Detection:* DAB