

# PGC-1 IHC Antibody

Rabbit Polyclonal

Antigen Affinity Purified

Protein ID Q9UBK2

Catalog No. IHC-00029

GeneID 10891

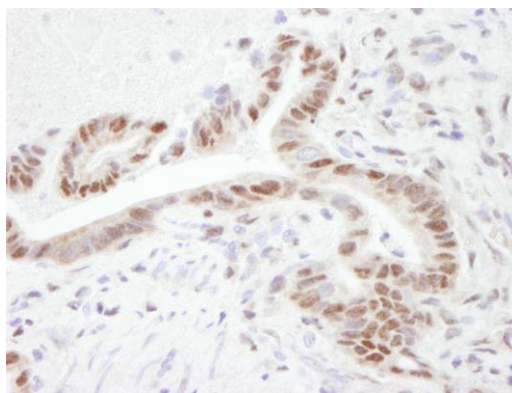
Lot No. IHC-00029-2



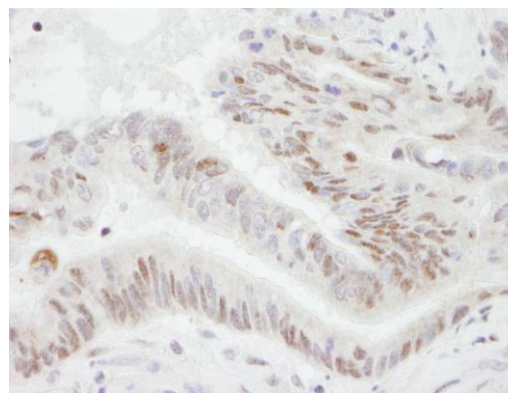
APPLICATIONS	IHC
SPECIES REACTIVITY	Human
AMOUNT	100 µl
CONCENTRATION	250 µg/ml
STORAGE/SHELF LIFE	2 – 8° C / 1 year from date of receipt
PHYSICAL STATE	Liquid
BUFFER	Tris-buffered Saline containing 0.1% BSA and 0.09% Sodium Azide
ISOTYPE	IgG
ORIGIN	USA
PRODUCTION PROCEDURES	<p>Antibody was affinity purified using an epitope specific to PGC-1 immobilized on solid support.</p> <p>The epitope recognized by IHC-00029 maps to a region between residue 250 and 300 of human peroxisome proliferative activated receptor, gamma, coactivator 1, alpha using the numbering given in SwissProt entry Q9UBK2 (GeneID 10891).</p>
APPLICATIONS	<p>Centrifuge tube to remove product from lid. Optimal working dilutions should be determined experimentally by the investigator. Prepare working dilution immediately before use.</p> <p>Immunohistochemistry 1:100 – 1:500</p>
APPLICATION NOTES	<p>Epitope exposure is recommended. Epitope exposure with citrate buffer will enhance staining. Likely to work with frozen sections. In some cases, the antibody may be diluted further than indicated.</p> <p>US Patent 6,166,192</p>
IHC HUMAN CONTROLS	Colon Carcinoma, Linitis Plastica Stomach Cancer, Ovarian Carcinoma, Stomach Adenocarcinoma
ADDITIONAL INFO	<p><a href="https://www.bethyl.com/product/IHC-00029">https://www.bethyl.com/product/IHC-00029</a></p> <p>Use the link above to view SDS, a current list of citations, and other product specific information.</p>

This document certifies that this product has met all of the quality control standards defined by Bethyl Laboratories, Inc.  
Eric McIntush, PhD | Chief Scientific Officer

Date: June 21, 2019



**Detection of human PGC-1 by immunohistochemistry.**  
*Sample:* FFPE section of human stomach adenocarcinoma.  
*Antibody:* Affinity purified rabbit anti-PGC-1 (Cat. No. IHC-00029 Lot2) used at a dilution of 1:250. *Detection:* DAB



**Detection of human PGC-1 by immunohistochemistry.**  
*Sample:* FFPE section of human colon adenocarcinoma.  
*Antibody:* Affinity purified rabbit anti-PGC-1 (Cat. No. IHC-00029 Lot2) used at a dilution of 1:250. *Detection:* DAB