

MTA1 IHC Antibody

Rabbit Polyclonal

Antigen Affinity Purified

Protein ID NP_004680.1

Catalog No. IHC-00026

GeneID 9112

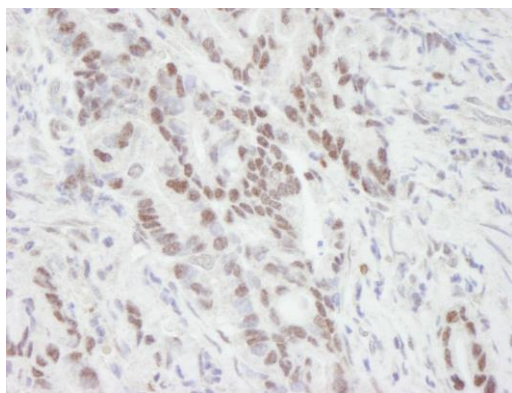
Lot No. IHC-00026-1



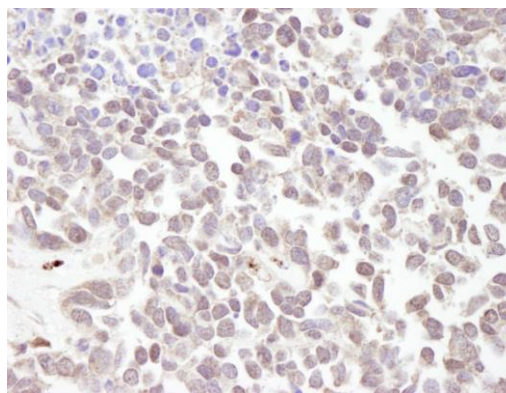
APPLICATIONS	IHC
SPECIES REACTIVITY	Human
PRESUMED REACTIVITY	Based on 100% sequence identity, this antibody is predicted to react with Bovine, Dog, Horse, Panda, Orangutan, Monkey, Gorilla, Northern white-cheeked gibbon, African elephant and Ferret
AMOUNT	100 µl
CONCENTRATION	500 µg/ml
STORAGE/SHELF LIFE	2 – 8° C / 1 year from date of receipt
PHYSICAL STATE	Liquid
BUFFER	Tris-buffered Saline containing 0.1% BSA and 0.09% Sodium Azide
ISOTYPE	IgG
ORIGIN	USA
PRODUCTION PROCEDURES	Antibody was affinity purified using an epitope specific to MTA1 immobilized on solid support. The epitope recognized by IHC-00026 maps to a region between residue 400 and 450 of human Metastasis Associated Protein 1 using the numbering given in SwissProt entry Q13330 (GeneID 9112).
APPLICATIONS	Centrifuge tube to remove product from lid. Optimal working dilutions should be determined experimentally by the investigator. Prepare working dilution immediately before use. Immunohistochemistry 1:100 – 1:500
APPLICATION NOTES	Epitope exposure is recommended. Epitope exposure with citrate buffer will enhance staining. Likely to work with frozen sections.
IHC HUMAN CONTROLS	In some cases, the antibody may be diluted further than indicated. Breast Carcinoma, Non-Small Cell Lung Cancer, Prostate Carcinoma, Stomach Adenocarcinoma
ADDITIONAL INFO	https://www.bethyl.com/product/IHC-00026 Use the link above to view SDS, a current list of citations, and other product specific information.

This document certifies that this product has met all of the quality control standards defined by Bethyl Laboratories, Inc.
Eric McIntush, PhD | Chief Scientific Officer

Date: June 21, 2019



Detection of human MTA1 by immunohistochemistry.
Sample: FFPE section of human stomach adenocarcinoma.
Antibody: Affinity purified rabbit anti-MTA1 (Cat. No. IHC-00026) used at a dilution of 1:100. *Detection:* DAB



Detection of human MTA1 by immunohistochemistry.
Sample: FFPE section of human lung non-small cell carcinoma. *Antibody:* Affinity purified rabbit anti-MTA1 (Cat. No. IHC-00026) used at a dilution of 1:100. *Detection:* DAB