

USP7 IHC Antibody

Rabbit Polyclonal

Antigen Affinity Purified

Protein ID NP_003461.1

Catalog No. IHC-00018

GeneID 7874

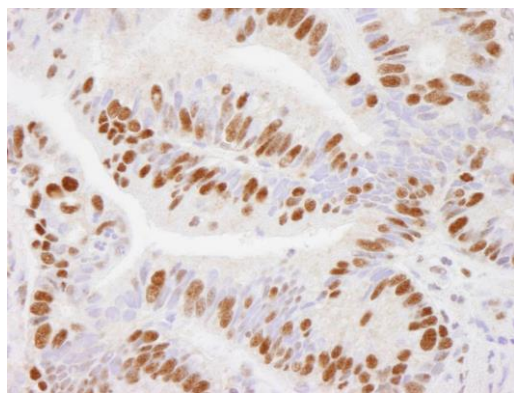
Lot No. IHC-00018-1



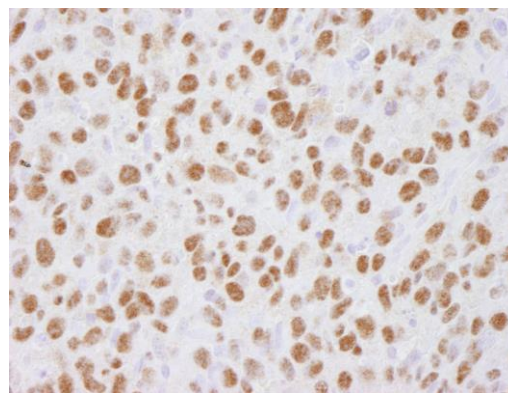
APPLICATIONS	IHC, IHC-IF
SPECIES REACTIVITY	Human, Mouse
PRESUMED REACTIVITY	Based on 100% sequence identity, this antibody is predicted to react with Rat, Pig, Monkey, Northern white-cheeked gibbon and Zebra finch
AMOUNT	100 µl
CONCENTRATION	100 µg/ml
STORAGE/SHELF LIFE	2 – 8° C / 1 year from date of receipt
PHYSICAL STATE	Liquid
BUFFER	Tris-buffered Saline containing 0.1% BSA and 0.09% Sodium Azide
ISOTYPE	IgG
ORIGIN	USA
PRODUCTION PROCEDURES	Antibody was affinity purified using an epitope specific to USP7 immobilized on solid support. The epitope recognized by IHC-00018 maps to a region between residue 1 and 50 of human Ubiquitin Specific Peptidase 7 using the numbering given in entry NP_003461.1 (GeneID 7874).
APPLICATIONS	Centrifuge tube to remove product from lid. Optimal working dilutions should be determined experimentally by the investigator. Prepare working dilution immediately before use. Immunohistochemistry 1:100 – 1:500 Immunofluorescence 1:50 – 1:500 (IHC)
APPLICATION NOTES	Epitope exposure is NOT recommended. Epitope exposure with citrate buffer will hinder staining. Likely to work with frozen sections. In some cases, the antibody may be diluted further than indicated.
IHC HUMAN CONTROLS	Breast Carcinoma, Colon Carcinoma, Hodgkins Lymphoma, Laryngeal Squamous Cell Carcinoma, Prostate Carcinoma, Stomach Adenocarcinoma, Testicular Seminoma
IHC MOUSE CONTROLS	Large Intestine, Skin, Squamous Cell Carcinoma, Stomach, Testis
ADDITIONAL INFO	https://www.bethyl.com/product/IHC-00018 Use the link above to view SDS, a current list of citations, and other product specific information.

This document certifies that this product has met all of the quality control standards defined by Bethyl Laboratories, Inc.
Eric McIntush, PhD | Chief Scientific Officer

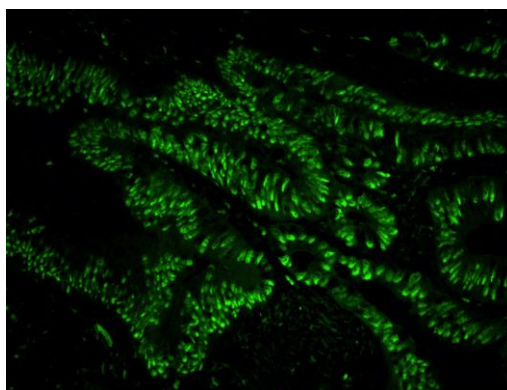
Date: June 21, 2019



Detection of human USP7 by immunohistochemistry.
Sample: FFPE section of human stomach adenocarcinoma.
Antibody: Affinity purified rabbit anti-USP7 (Cat. No. IHC-00018) used at a dilution of 1:500. *Detection:* DAB



Detection of mouse USP7 by immunohistochemistry.
Sample: FFPE section of mouse squamous cell carcinoma.
Antibody: Affinity purified rabbit anti-USP7 (Cat. No. IHC-00018) used at a dilution of 1:100. *Detection:* DAB



Detection of human USP7 by immunohistochemistry.
Sample: FFPE section of human colon adenocarcinoma.
Antibody: Affinity purified rabbit anti-USP7 (Cat. No. IHC-00018) used at a dilution of 1:100. *Detection:* Green-fluorescent Anti-rabbit IgG FITC conjugated (Cat. No. A120-501F) used at a dilution of 1:100.