

Phospho SMC1 (S966) IHC Antibody

Rabbit Polyclonal

Antigen Affinity Purified

Protein ID NP_006297.2

Catalog No. IHC-00016

GeneID 8243

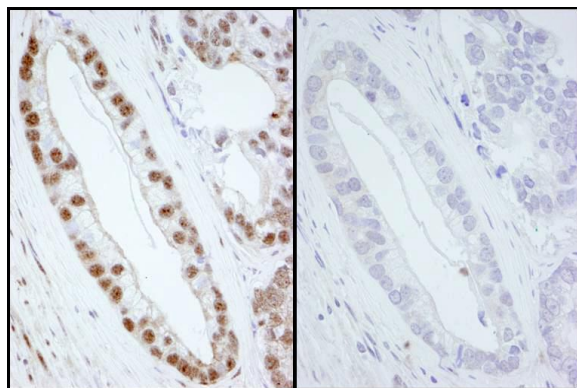
Lot No. IHC-00016-1



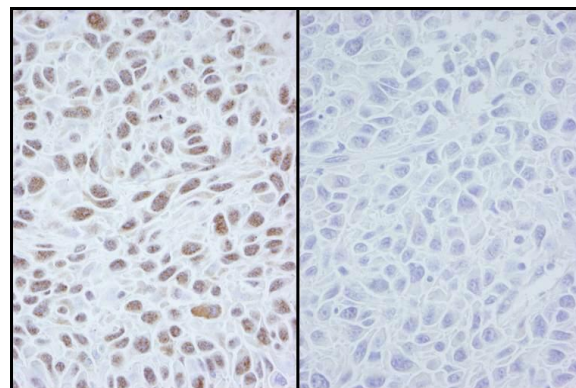
APPLICATIONS	IHC
SPECIES REACTIVITY	Human, Mouse
PRESUMED REACTIVITY	Based on 100% sequence identity, this antibody is predicted to react with Orangutan, Monkey, Northern white-cheeked gibbon, Small-eared galago, Crab-eating macaque and White-tufted-ear marmoset
AMOUNT	100 µl
CONCENTRATION	250 µg/ml
STORAGE/SHELF LIFE	2 – 8° C / 1 year from date of receipt
PHYSICAL STATE	Liquid
BUFFER	Tris-buffered Saline containing 0.1% BSA and 0.09% Sodium Azide
ISOTYPE	IgG
ORIGIN	USA
PRODUCTION PROCEDURES	Antibody was affinity purified using an epitope specific to Phospho-SMC1 (Ser 966) immobilized on solid support. Immunogen for IHC-00016 was a phosphorylated synthetic peptide, which represented a portion of human Structural Maintenance of Chromosomes 1 (GeneID 8243) around serine 966 according to the numbering given in entry NP_006297.2.
APPLICATIONS	Centrifuge tube to remove product from lid. Optimal working dilutions should be determined experimentally by the investigator. Prepare working dilution immediately before use. Immunohistochemistry 1:100 – 1:500
APPLICATION NOTES	Epitope exposure is recommended. Epitope exposure with citrate buffer will enhance staining. Likely to work with frozen sections. In some cases, the antibody may be diluted further than indicated.
IHC HUMAN CONTROLS	Breast Carcinoma, Prostate Carcinoma
IHC MOUSE CONTROLS	Squamous Cell Carcinoma
ADDITIONAL INFO	https://www.bethyl.com/product/IHC-00016 Use the link above to view SDS, a current list of citations, and other product specific information.

This document certifies that this product has met all of the quality control standards defined by Bethyl Laboratories, Inc.
Eric McIntush, PhD | Chief Scientific Officer

Date: June 21, 2019



Detection of human Phospho SMC1 (Ser 966) by immunohistochemistry. *Samples:* FFPE sections of human prostate carcinoma. Mock treatment (left panel) or lambda phosphatase-treatment (right panel). *Antibody:* Affinity purified rabbit anti-Phospho-SMC1 (Ser 966) (Cat. No. IHC-00016) used at a dilution of 1:250. *Detection:* DAB



Detection of mouse Phospho SMC1 (Ser 966) by immunohistochemistry. *Samples:* FFPE sections of mouse squamous cell carcinoma. Mock treatment (left panel) or lambda phosphatase-treatment (right panel). *Antibody:* Affinity purified rabbit anti-Phospho-SMC1 (Ser 966) (Cat. No. IHC-00016) used at a dilution of 1:250. *Detection:* DAB