

Phospho MCM2 (S41) IHC Antibody

Rabbit Polyclonal

Antigen Affinity Purified

Protein ID NP_004517.2

Catalog No. IHC-00015

GeneID 4171

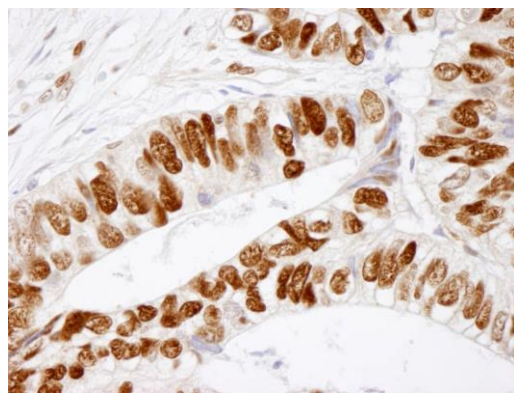
Lot No. IHC-00015-1



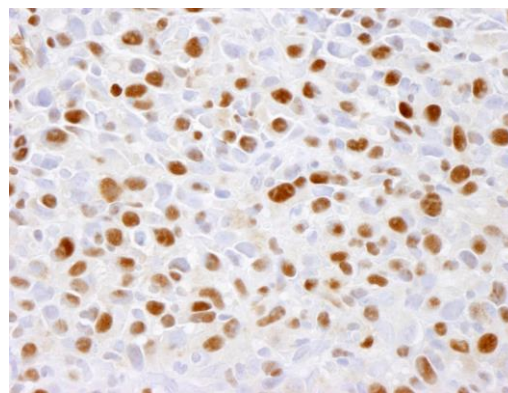
APPLICATIONS	IHC
SPECIES REACTIVITY	Human, Mouse
PRESUMED REACTIVITY	Based on 100% sequence identity, this antibody is predicted to react with Rat, X. laevis, X. tropicalis, Bovine, Dog, Horse, Rabbit, Guinea pig_10141, Pig, Panda, Orangutan, Monkey and Gorilla
AMOUNT	100 µl
CONCENTRATION	100 µg/ml
STORAGE/SHELF LIFE	2 – 8° C / 1 year from date of receipt
PHYSICAL STATE	Liquid
BUFFER	Tris-buffered Saline containing 0.1% BSA and 0.09% Sodium Azide
ISOTYPE	IgG
ORIGIN	USA
PRODUCTION PROCEDURES	Antibody was affinity purified using an epitope specific to Phospho-MCM2 (Ser 41) immobilized on solid support. Immunogen for IHC-00015 was a synthetic phosphorylated peptide, which represented a portion of human Minichromosomal Maintenance Deficient 2 surrounding Serine 41 according to the numbering given in entry NP_004517.2 (GeneID 4171).
APPLICATIONS	Centrifuge tube to remove product from lid. Optimal working dilutions should be determined experimentally by the investigator. Prepare working dilution immediately before use. Immunohistochemistry 1:100 – 1:500
APPLICATION NOTES	Epitope exposure is recommended. Epitope exposure with citrate buffer will enhance staining. Likely to work with frozen sections.
IHC HUMAN CONTROLS	In some cases, the antibody may be diluted further than indicated. Breast Carcinoma, Colon Carcinoma, Laryngeal Squamous Cell Carcinoma, Skin, Small Cell Lung Cancer
IHC MOUSE CONTROLS	Squamous Cell Carcinoma
ADDITIONAL INFO	https://www.bethyl.com/product/IHC-00015 Use the link above to view SDS, a current list of citations, and other product specific information.

This document certifies that this product has met all of the quality control standards defined by Bethyl Laboratories, Inc.
Eric McIntush, PhD | Chief Scientific Officer

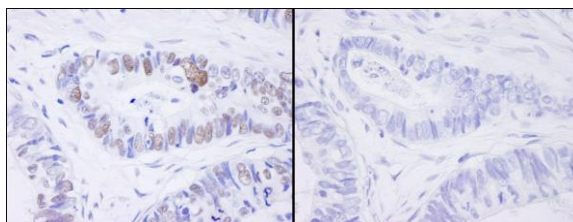
Date: June 21, 2019



Detection of human phospho-MCM2 (Ser 41) by immunohistochemistry. *Sample:* FFPE section of human colon adenocarcinoma. *Antibody:* Affinity purified rabbit anti-Phospho-MCM2 (Ser 41) (Cat. No. IHC-00015) used at a dilution of 1:100. *Detection:* DAB



Detection of mouse phospho-MCM2 (Ser 41) by immunohistochemistry. *Sample:* FFPE section of mouse squamous cell carcinoma. *Antibody:* Affinity purified rabbit anti-Phospho-MCM2 (Ser 41) (Cat. No. IHC-00015) used at a dilution of 1:100. *Detection:* DAB



Detection of human Phospho MCM2 (Ser 41) by immunohistochemistry. *Samples:* FFPE serial sections of human colon carcinoma. Mock phosphatase treated section (left) or CIP phosphatase-treated section (right). *Antibody:* Affinity purified rabbit anti-Phospho MCM2 (Ser 41) (Cat. No. IHC-00015) used at a dilution of 1:250. *Detection:* DAB