

Phospho MCM2 (S108) IHC Antibody

Rabbit Polyclonal

Antigen Affinity Purified

Protein ID NP_004517.2

Catalog No. IHC-00014

GeneID 4171

Lot No. IHC-00014-3



APPLICATIONS	IHC, IHC-IF
SPECIES REACTIVITY	Human, Mouse
PRESUMED REACTIVITY	Based on 100% sequence identity, this antibody is predicted to react with Rat, Chicken, Turkey, Bovine, Dog, Horse, Rabbit, Guinea pig_10141, Pig, Panda, Orangutan, Monkey, Gorilla and Chimpanzee
AMOUNT	100 µl
CONCENTRATION	100 µg/ml
STORAGE/SHELF LIFE	2 – 8° C / 1 year from date of receipt
PHYSICAL STATE	Liquid
BUFFER	Tris-buffered Saline containing 0.1% BSA and 0.09% Sodium Azide
ISOTYPE	IgG
ORIGIN	USA
PRODUCTION PROCEDURES	Antibody was affinity purified using an epitope specific to Phospho-MCM2 (Ser 108) immobilized on solid support.

Immunogen for IHC-00014 was a synthetic phosphorylated peptide, which represented a portion of human Minichromosomal Maintenance Deficient 2 surrounding Serine 108 according to the numbering given in entry NP_004517.2 (GeneID 4171).

APPLICATIONS Centrifuge tube to remove product from lid. Optimal working dilutions should be determined experimentally by the investigator. Prepare working dilution immediately before use.

Immunohistochemistry 1:100 – 1:500

Immunofluorescence 1:50 – 1:500
(IHC)

APPLICATION NOTES Epitope exposure is recommended.

Epitope exposure with citrate buffer will enhance staining.

Likely to work with frozen sections.

In some cases, the antibody may be diluted further than indicated.

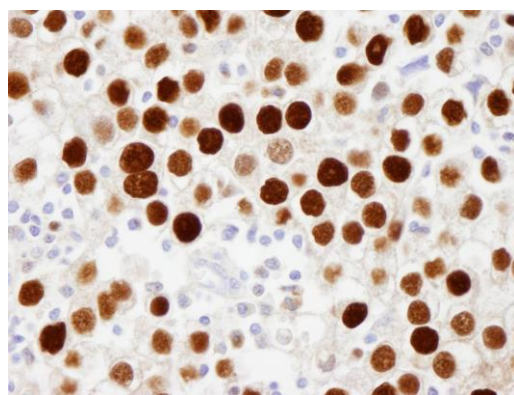
IHC HUMAN CONTROLS Breast Carcinoma, Colon Carcinoma, Laryngeal Squamous Cell Carcinoma, Skin, Small Cell Lung Cancer, Testicular Seminoma

IHC MOUSE CONTROLS Squamous Cell Carcinoma

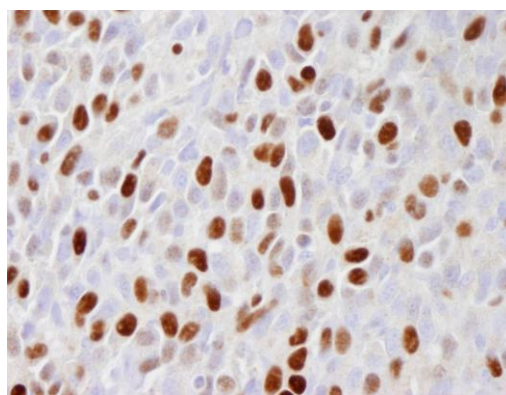
ADDITIONAL INFO <https://www.bethyl.com/product/IHC-00014>

Use the link above to view SDS, a current list of citations, and other product specific information.

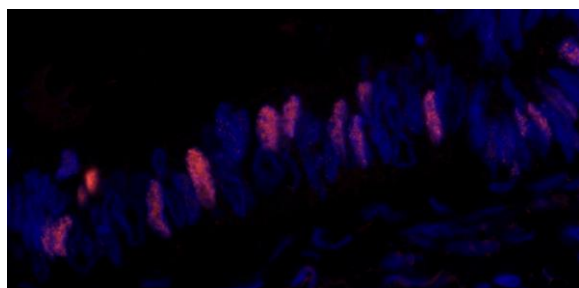
This document certifies that this product has met all of the quality control standards defined by Bethyl Laboratories, Inc.
Eric McIntush, PhD | Chief Scientific Officer Date: June 21, 2019



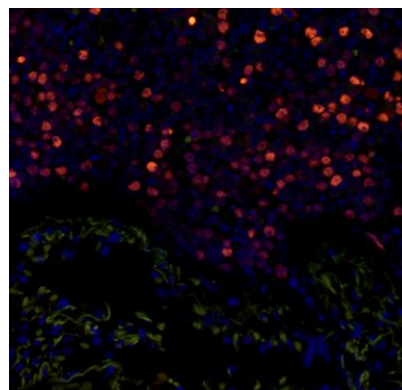
Detection of human phospho-MCM2 (Ser 108) by immunohistochemistry. *Sample:* FFPE section of human seminoma. *Antibody:* Affinity purified rabbit anti-Phospho-MCM2 (Ser 108) (Cat. No. IHC-00014) used at a dilution of 1:100. *Detection:* DAB



Detection of mouse phospho-MCM2 (Ser 108) by immunohistochemistry. *Sample:* FFPE section of mouse squamous cell carcinoma. *Antibody:* Affinity purified rabbit anti-Phospho-MCM2 (Ser 108) (Cat. No. IHC-00014) used at a dilution of 1:100. *Detection:* DAB



Detection of human Phospho MCM2 (Ser 108) by immunohistochemistry. *Sample:* FFPE section of human colon carcinoma. *Antibody:* Affinity purified rabbit anti-Phospho-MCM2 (Ser 108) (Cat. No. IHC-00014) used at a dilution of 1:100. *Detection:* Red-fluorescent Alexa Fluor® 555 goat antirabbit IgG (Invitrogen) used at a dilution of 1:500.



Detection of human Phospho MCM2 (Ser 108) by immunohistochemistry. *Sample:* FFPE section of human small cell lung cancer. *Antibody:* Affinity purified rabbit anti-Phospho-MCM2 (Ser 108) (Cat. No. IHC-00014) used at a dilution of 1:100. *Detection:* Red-fluorescent Alexa Fluor® 555 goat antirabbit IgG (Invitrogen) used at a dilution of 1:500.