

PELP1 /MNAR IHC Antibody

Rabbit Polyclonal

Antigen Affinity Purified

Protein ID AAN41255.1

Catalog No. IHC-00013

GeneID 27043

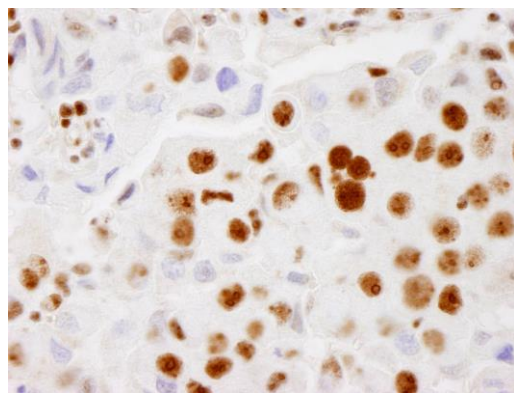
Lot No. IHC-00013-1



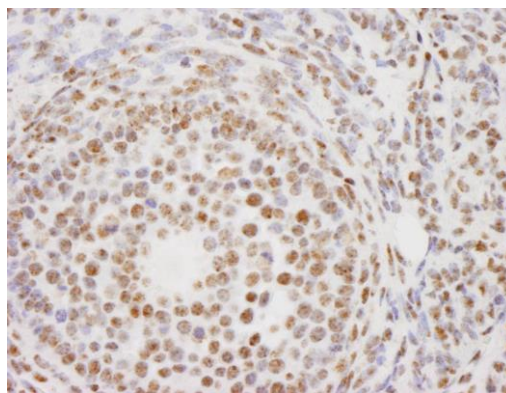
APPLICATIONS	IHC
SPECIES REACTIVITY	Human, Mouse
PRESUMED REACTIVITY	Based on 100% sequence identity, this antibody is predicted to react with Chimpanzee
AMOUNT	100 µl
CONCENTRATION	250 µg/ml
STORAGE/SHELF LIFE	2 – 8° C / 1 year from date of receipt
PHYSICAL STATE	Liquid
BUFFER	Tris-buffered Saline containing 0.1% BSA and 0.09% Sodium Azide
ISOTYPE	IgG
ORIGIN	USA
PRODUCTION PROCEDURES	<p>Antibody was affinity purified using an epitope specific to PELP1 /MNAR immobilized on solid support.</p> <p>The epitope recognized by IHC-00013 maps to a region between residue 1000 and 1050 of human proline-, glutamic acid-, leucine-rich protein 1 / modulator of nongenomic activity of estrogen receptor using the numbering given in entry AAN41255.1 (GeneID 27043).</p>
APPLICATIONS	<p>Centrifuge tube to remove product from lid. Optimal working dilutions should be determined experimentally by the investigator. Prepare working dilution immediately before use.</p> <p>Immunohistochemistry 1:100 – 1:500</p>
APPLICATION NOTES	<p>Epitope exposure is recommended.</p> <p>Epitope exposure with citrate buffer will enhance staining.</p> <p>Likely to work with frozen sections.</p> <p>In some cases, the antibody may be diluted further than indicated.</p>
IHC HUMAN CONTROLS	Breast Carcinoma
IHC MOUSE CONTROLS	Brain, Ovary, Testis, Uterus
ADDITIONAL INFO	<p>https://www.bethyl.com/product/IHC-00013</p> <p>Use the link above to view SDS, a current list of citations, and other product specific information.</p>

This document certifies that this product has met all of the quality control standards defined by Bethyl Laboratories, Inc.
Eric McIntush, PhD | Chief Scientific Officer

Date: June 21, 2019



Detection of human PELP1/MNAR by immunohistochemistry. *Sample:* FFPE section of human breast adenocarcinoma. *Antibody:* Affinity purified rabbit anti-PELP1/MNAR (Cat. No. IHC-00013) used at a dilution of 1:500. *Detection:* DAB



Detection of mouse PELP1/MNAR by immunohistochemistry. *Sample:* FFPE section of mouse ovary. *Antibody:* Affinity purified rabbit anti-PELP1/MNAR (Cat. No. IHC-00013) used at a dilution of 1:100. *Detection:* DAB