

# p53 IHC Antibody

Rabbit Polyclonal

Antigen Affinity Purified

Protein ID NP\_000537.2

Catalog No. IHC-00010

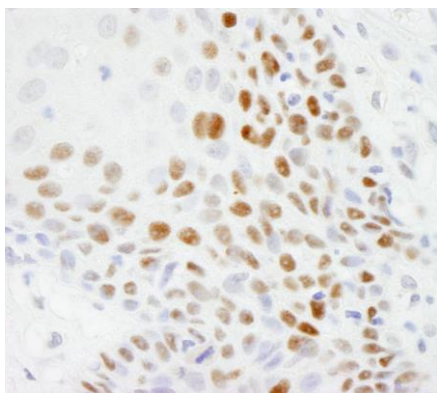
GeneID 7157

Lot No. IHC-00010-1

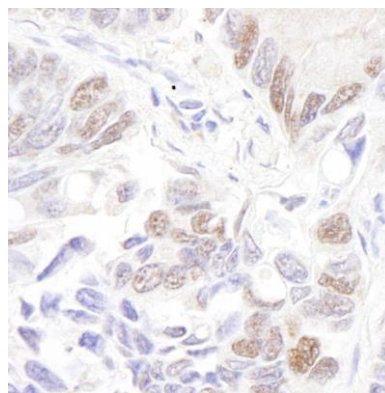


APPLICATIONS	IHC
SPECIES REACTIVITY	Human
PRESUMED REACTIVITY	Based on 100% sequence identity, this antibody is predicted to react with Gorilla, Chimpanzee and Common tree shrew
AMOUNT	100 µl
CONCENTRATION	100 µg/ml
STORAGE/SHELF LIFE	2 – 8° C / 1 year from date of receipt
PHYSICAL STATE	Liquid
BUFFER	Tris-buffered Saline containing 0.1% BSA and 0.09% Sodium Azide
ISOTYPE	IgG
ORIGIN	USA
PRODUCTION PROCEDURES	Antibody was affinity purified using an epitope specific to p53 immobilized on solid support.  The epitope recognized by IHC-00010 maps to a region between residue 50 and 100 of human tumor protein p53 using the numbering given in entry NP 000537.2 (GeneID 7157).
APPLICATIONS	Centrifuge tube to remove product from lid. Optimal working dilutions should be determined experimentally by the investigator. Prepare working dilution immediately before use.  Immunohistochemistry 1:100 – 1:500
APPLICATION NOTES	Epitope exposure is recommended.  Epitope exposure with citrate buffer will enhance staining.  Likely to work with frozen sections.
IHC HUMAN CONTROLS	In some cases, the antibody may be diluted further than indicated. Skin Squamous Cell Carcinoma
ADDITIONAL INFO	<a href="https://www.bethyl.com/product/IHC-00010">https://www.bethyl.com/product/IHC-00010</a> Use the link above to view SDS, a current list of citations, and other product specific information.

This document certifies that this product has met all of the quality control standards defined by Bethyl Laboratories, Inc.  
Eric McIntush, PhD | Chief Scientific Officer Date: June 21, 2019

**Detection of human p53 by immunohistochemistry.**

*Sample:* FFPE section of human skin squamous cell carcinoma. *Antibody:* Affinity purified rabbit anti-p53 (Cat. No. IHC-00010) used at a dilution of 1:500. *Detection:* DAB

**Detection of human p53 by immunohistochemistry.**

*Sample:* FFPE section of human lung adenocarcinoma. *Antibody:* Affinity purified rabbit anti-p53 (Cat. No. IHC-00010) used at a dilution of 1:500. *Detection:* DAB