

MCM2 IHC Antibody

Rabbit Polyclonal

Antigen Affinity Purified

Protein ID NP_0045117.2

Catalog No. IHC-00009

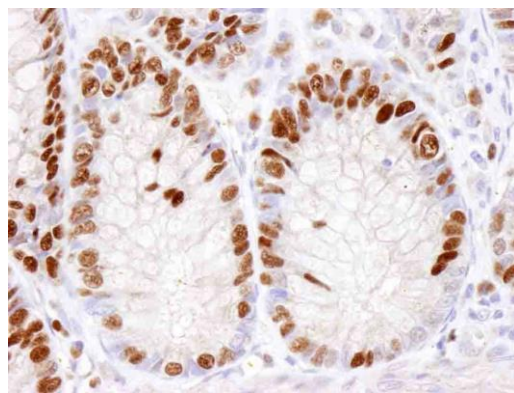
GeneID 4171

Lot No. IHC-00009-1

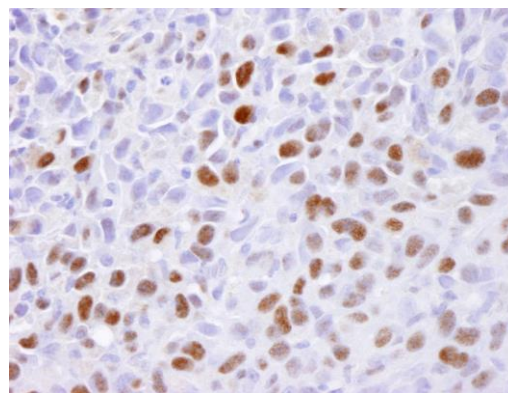


APPLICATIONS	IHC, IHC-IF
SPECIES REACTIVITY	Human, Mouse
PRESUMED REACTIVITY	Based on 100% sequence identity, this antibody is predicted to react with X. laevis, Orangutan, Gorilla and Chimpanzee
AMOUNT	100 µl
CONCENTRATION	100 µg/ml
STORAGE/SHELF LIFE	2 – 8° C / 1 year from date of receipt
PHYSICAL STATE	Liquid
BUFFER	Tris-buffered Saline containing 0.1% BSA and 0.09% Sodium Azide
ISOTYPE	IgG
ORIGIN	USA
PRODUCTION PROCEDURES	<p>Antibody was affinity purified using an epitope specific to MCM2 immobilized on solid support.</p> <p>The epitope recognized by IHC-00009 maps to a region between residue 1 and 50 of human minichromosomal maintenance deficient 2 using the numbering given in entry NP_0045117.2 (GeneID 4171).</p>
APPLICATIONS	<p>Centrifuge tube to remove product from lid. Optimal working dilutions should be determined experimentally by the investigator. Prepare working dilution immediately before use.</p> <p>Immunohistochemistry 1:100 – 1:500</p> <p>Immunofluorescence 1:50 – 1:500 (IHC)</p>
APPLICATION NOTES	<p>Epitope exposure is recommended.</p> <p>Epitope exposure with citrate buffer will enhance staining.</p> <p>Likely to work with frozen sections.</p> <p>In some cases, the antibody may be diluted further than indicated.</p>
IHC HUMAN CONTROLS	Breast Carcinoma, Colon Carcinoma, Skin, Small Cell Lung Cancer, Small Intestine, Spleen
IHC MOUSE CONTROLS	Squamous Cell Carcinoma
ADDITIONAL INFO	<p>https://www.bethyl.com/product/IHC-00009</p> <p>Use the link above to view SDS, a current list of citations, and other product specific information.</p>

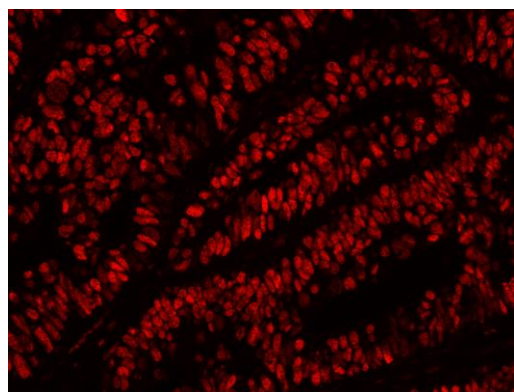
This document certifies that this product has met all of the quality control standards defined by Bethyl Laboratories, Inc.
Eric McIntush, PhD | Chief Scientific Officer Date: June 21, 2019



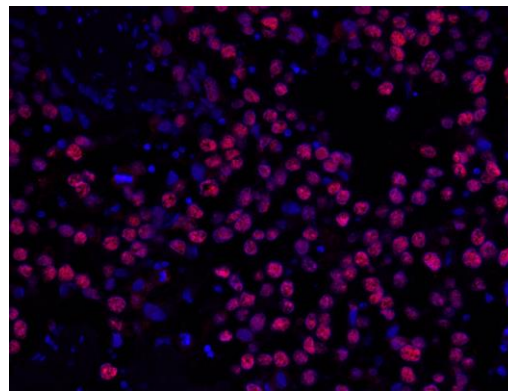
Detection of human MCM2 by immunohistochemistry.
Sample: FFPE section of human colon. *Antibody:* Affinity purified rabbit anti-MCM2 (Cat. No. IHC-00009) used at a dilution of 1:500. *Detection:* DAB



Detection of mouse MCM2 by immunohistochemistry.
Sample: FFPE section of mouse squamous cell carcinoma. *Antibody:* Affinity purified rabbit anti-MCM2 (Cat. No. IHC-00009) used at a dilution of 1:500. *Detection:* DAB



Detection of human MCM2 by immunohistochemistry.
Sample: FFPE section of human colon carcinoma. *Antibody:* Affinity purified rabbit anti-MCM2 (Cat. No. IHC-00009) used at a dilution of 1:100. *Detection:* Red-fluorescent goat anti-rabbit IgG highly cross-adsorbed Antibody



Detection of human MCM2 by immunohistochemistry.
Sample: FFPE section of human seminoma. *Antibody:* Affinity purified rabbit anti-MCM2 (Cat. No. IHC-00009) used at a dilution of 1:100. *Detection:* Red-fluorescent goat anti-rabbit IgG highly cross-adsorbed Antibody