

# EGFR IHC Antibody

Rabbit Polyclonal

Antigen Affinity Purified

Protein ID P00533

Catalog No. IHC-00005

GeneID 1956

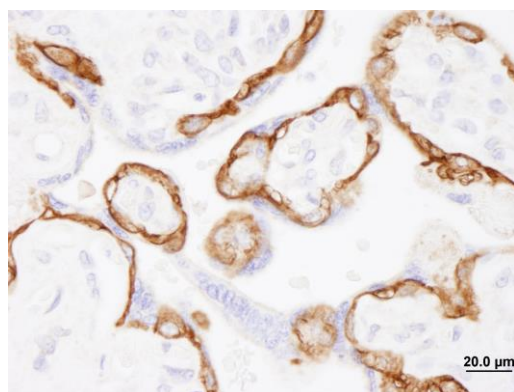
Lot No. IHC-00005-1



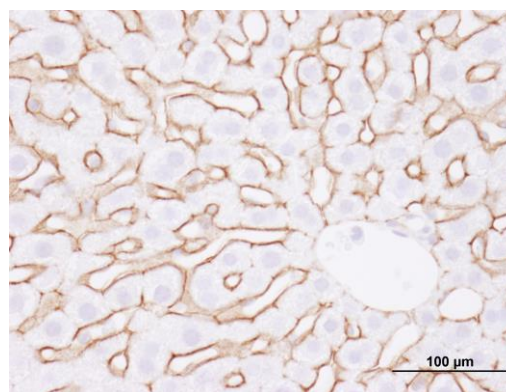
<b>APPLICATIONS</b>	IHC, IHC-IF
<b>SPECIES REACTIVITY</b>	Human, Mouse
<b>PRESUMED REACTIVITY</b>	Based on 100% sequence identity, this antibody is predicted to react with Monkey, Gorilla, Chimpanzee, Northern white-cheeked gibbon, Crab-eating macaque and White-tufted-ear marmoset
<b>AMOUNT</b>	100 µl
<b>CONCENTRATION</b>	250 µg/ml
<b>STORAGE/SHELF LIFE</b>	2 – 8° C / 1 year from date of receipt
<b>PHYSICAL STATE</b>	Liquid
<b>BUFFER</b>	Tris-buffered Saline containing 0.1% BSA and 0.09% Sodium Azide
<b>ISOTYPE</b>	IgG
<b>ORIGIN</b>	USA
<b>PRODUCTION PROCEDURES</b>	Antibody was affinity purified using an epitope specific to EGFR immobilized on solid support.  The epitope recognized by IHC-00005 maps to a region between residue 1150 and the C-terminus (residue 1210) of human Epidermal Growth Factor Receptor using the numbering given in SwissProt entry P00533 (GeneID 1956).
<b>APPLICATIONS</b>	Centrifuge tube to remove product from lid. Optimal working dilutions should be determined experimentally by the investigator. Prepare working dilution immediately before use.  Immunohistochemistry 1:100 – 1:500  Immunofluorescence 1:50 – 1:500 (IHC)
<b>APPLICATION NOTES</b>	Epitope exposure is recommended.  Epitope exposure with citrate buffer will enhance staining.  Likely to work with frozen sections.  In some cases, the antibody may be diluted further than indicated.
<b>IHC HUMAN CONTROLS</b>	Cervix, Esophagus, Placenta
<b>ADDITIONAL INFO</b>	<a href="https://www.bethyl.com/product/IHC-00005">https://www.bethyl.com/product/IHC-00005</a> Use the link above to view SDS, a current list of citations, and other product specific information.

This document certifies that this product has met all of the quality control standards defined by Bethyl Laboratories, Inc.  
Eric McIntush, PhD | Chief Scientific Officer

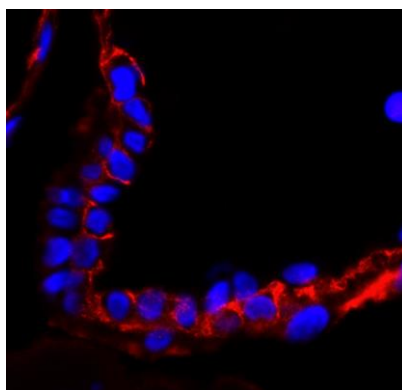
Date: June 21, 2019



**Detection of human EGFR by immunohistochemistry.**  
*Samples:* FFPE section of human placenta. *Antibody:* Affinity purified rabbit anti-EGFR (Cat. No. IHC-00005) used at a dilution of 1:100. *Detection:* DAB



**Detection of mouse EGFR by immunohistochemistry.**  
*Samples:* FFPE section of mouse liver. *Antibody:* Affinity purified rabbit anti-EGFR (Cat. No. IHC-00005) used at a dilution of 1:100. *Detection:* DAB



**Detection of human EGFR by immunohistochemistry.**  
*Sample:* FFPE section of human placenta. *Antibody:* Affinity purified rabbit anti-EGFR (Cat. No. IHC-00005-T) used at a dilution of 1:100. *Detection:* Red-fluorescent goat anti-rabbit IgG highly cross-adsorbed Antibody