

Chk1 IHC Antibody

Rabbit Polyclonal

Antigen Affinity Purified

Protein ID O14757

Catalog No. IHC-00004

GeneID 1111

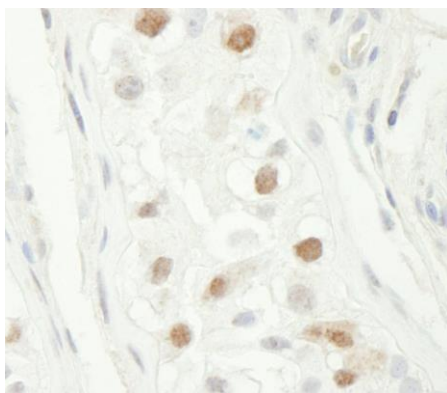
Lot No. IHC-00004-1



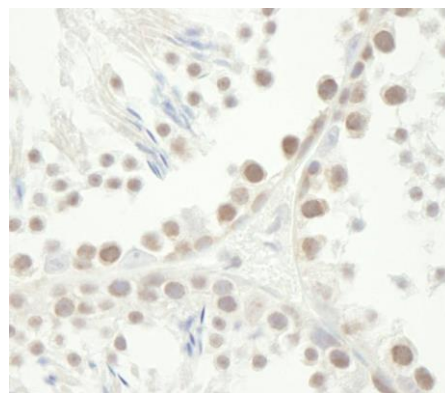
APPLICATIONS	IHC
SPECIES REACTIVITY	Human, Mouse
PRESUMED REACTIVITY	Based on 100% sequence identity, this antibody is predicted to react with Dog, Pig, Panda, Orangutan, Monkey, Gorilla, Chimpanzee, Northern white-cheeked gibbon and Small-eared galago
AMOUNT	100 µl
CONCENTRATION	100 µg/ml
STORAGE/SHELF LIFE	2 – 8° C / 1 year from date of receipt
PHYSICAL STATE	Liquid
BUFFER	Tris-buffered Saline containing 0.1% BSA and 0.09% Sodium Azide
ISOTYPE	IgG
ORIGIN	USA
PRODUCTION PROCEDURES	Antibody was affinity purified using an epitope specific to Chk1 immobilized on solid support. The epitope recognized by IHC-00004 maps to a region between residue 250 and 300 of human Checkpoint Kinase 1 using the numbering given in SwissProt entry O14757 (GeneID 1111).
APPLICATIONS	Centrifuge tube to remove product from lid. Optimal working dilutions should be determined experimentally by the investigator. Prepare working dilution immediately before use. Immunohistochemistry 1:100 – 1:500
APPLICATION NOTES	Epitope exposure is recommended. Epitope exposure with citrate buffer will enhance staining. Likely to work with frozen sections. In some cases, the antibody may be diluted further than indicated.
IHC HUMAN CONTROLS	Colon Carcinoma, Testicular Seminoma
IHC MOUSE CONTROLS	Testis
ADDITIONAL INFO	https://www.bethyl.com/product/IHC-00004 Use the link above to view SDS, a current list of citations, and other product specific information.

This document certifies that this product has met all of the quality control standards defined by Bethyl Laboratories, Inc.
Eric McIntush, PhD | Chief Scientific Officer

Date: June 21, 2019



Detection of human Chk1 by immunohistochemistry.
Samples: FFPE section of human testis. *Antibody:* Affinity purified rabbit anti-Chk1 (Cat. No. IHC-00004) used at a dilution of 1:100. *Detection:* DAB



Detection of mouse Chk1 by immunohistochemistry.
Samples: FFPE sections of mouse testis. *Antibody:* Affinity purified rabbit anti-Chk1 (Cat. No. IHC-00004) used at a dilution of 1:100. *Detection:* DAB