

# Aurora B IHC Antibody

Rabbit Polyclonal

Antigen Affinity Purified

Protein ID Q96GD4

Catalog No. IHC-00003

GeneID 9212

Lot No. IHC-00003-1



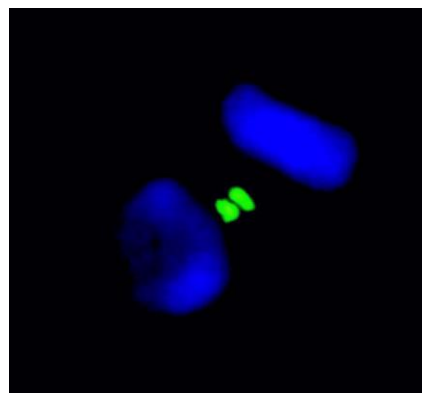
<b>APPLICATIONS</b>	IHC, ICC-IF
<b>SPECIES REACTIVITY</b>	Human
<b>PRESUMED REACTIVITY</b>	Based on 100% sequence identity, this antibody is predicted to react with Orangutan, Monkey, Gorilla, Chimpanzee and Crab-eating macaque
<b>AMOUNT</b>	100 µl
<b>CONCENTRATION</b>	100 µg/ml
<b>STORAGE/SHELF LIFE</b>	2 – 8° C / 1 year from date of receipt
<b>PHYSICAL STATE</b>	Liquid
<b>BUFFER</b>	Tris-buffered Saline containing 0.1% BSA and 0.09% Sodium Azide
<b>ISOTYPE</b>	IgG
<b>ORIGIN</b>	USA
<b>PRODUCTION PROCEDURES</b>	<p>Antibody was affinity purified using an epitope specific to Aurora B immobilized on solid support.</p> <p>The epitope recognized by IHC-00003 maps to a region between residue 300 and the C-terminus (residue 344) of human Aurora B using the numbering given in SwissProt entry Q96GD4 (GeneID 9212).</p>
<b>APPLICATIONS</b>	<p>Centrifuge tube to remove product from lid. Optimal working dilutions should be determined experimentally by the investigator. Prepare working dilution immediately before use.</p> <p>Immunohistochemistry 1:100 – 1:500</p> <p>Immunofluorescence (ICC) 1:100 – 1:500</p>
<b>APPLICATION NOTES</b>	<p>Formalin-fixed Paraffin-Embedded Tissue 1:100 – 1:500: Epitope exposure is recommended. Epitope exposure with citrate buffer will enhance staining.</p> <p>Formalin-fixed cells 1:100 – 1:500: Permeabilization is recommended.</p> <p>Likely to work with frozen sections.</p> <p>In some cases, the antibody may be diluted further than indicated.</p>
<b>ADDITIONAL INFO</b>	<p><a href="https://www.bethyl.com/product/IHC-00003">https://www.bethyl.com/product/IHC-00003</a></p> <p>Use the link above to view SDS, a current list of citations, and other product specific information.</p>

This document certifies that this product has met all of the quality control standards defined by Bethyl Laboratories, Inc.  
Eric McIntush, PhD | Chief Scientific Officer

Date: June 21, 2019

**Detection of human Aurora B by immunohistochemistry.**

*Sample:* FFPE section of human colon adenocarcinoma. *Antibody:* Affinity purified rabbit anti-Aurora B (Cat. No. IHC-00003) used at a dilution of 1:100. *Detection:* DAB

**Detection of human Aurora B by immunocytochemistry.**

*Sample:* NBF-fixed HeLa Cells. *Antibody:* Affinity purified rabbit anti-Aurora B (Cat. No. IHC-00003) used at a dilution of 1:100. *Detection:* goat anti-rabbit IgG (h&l) FITC (Cat. No. A120-101F) used at a dilution of 1:100.