

AMPK alpha 1 IHC Antibody

Rabbit Polyclonal

Antigen Affinity Purified

Protein ID BAA36547.1

Catalog No. IHC-00002

GeneID 5562

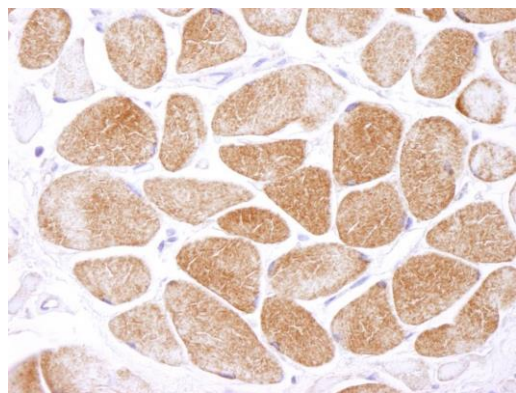
Lot No. IHC-00002-1



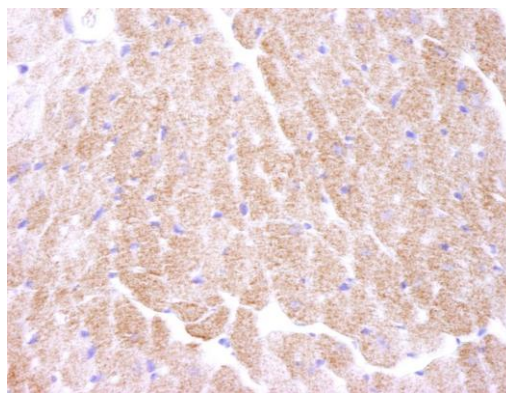
APPLICATIONS	IHC
SPECIES REACTIVITY	Human, Mouse
PRESUMED REACTIVITY	Based on 100% sequence identity, this antibody is predicted to react with Rat, Chicken, Turkey, Bovine, Dog, Horse, Rabbit, Guinea pig_10141, Pig, Panda, Orangutan, Monkey, Gorilla and Chimpanzee
AMOUNT	100 µl
CONCENTRATION	50 µg/ml
STORAGE/SHELF LIFE	2 – 8° C / 1 year from date of receipt
PHYSICAL STATE	Liquid
BUFFER	Tris-buffered Saline containing 0.1% BSA and 0.09% Sodium Azide
ISOTYPE	IgG
ORIGIN	USA
PRODUCTION PROCEDURES	Antibody was affinity purified using an epitope specific to AMPK alpha 1 immobilized on solid support. The epitope recognized by IHC-00002 maps to a region between residue 350 and 400 of human 5'-AMP-activated Protein Kinase, catalytic Alpha-1 chain using the numbering given in entry BAA36547.1 (GeneID 5562).
APPLICATIONS	Centrifuge tube to remove product from lid. Optimal working dilutions should be determined experimentally by the investigator. Prepare working dilution immediately before use. Immunohistochemistry 1:100 – 1:500
APPLICATION NOTES	Epitope exposure is NOT recommended. Epitope exposure with citrate buffer will hinder staining. Likely to work with frozen sections. In some cases, the antibody may be diluted further than indicated.
IHC HUMAN CONTROLS	Skeletal Muscle
IHC MOUSE CONTROLS	Heart
ADDITIONAL INFO	https://www.bethyl.com/product/IHC-00002 Use the link above to view SDS, a current list of citations, and other product specific information.

This document certifies that this product has met all of the quality control standards defined by Bethyl Laboratories, Inc.
Eric McIntush, PhD | Chief Scientific Officer

Date: June 21, 2019



Detection of human AMPK alpha 1 by immunohistochemistry. *Samples:* FFPE section of human skeletal muscle. *Antibody:* Affinity purified rabbit anti-AMPK alpha 1 (Cat. No. IHC-00002) used at a dilution of 1:250. *Detection:* DAB



Detection of mouse AMPK alpha 1 by immunohistochemistry. *Samples:* FFPE section of mouse heart. *Antibody:* Affinity purified rabbit anti-AMPK alpha 1 (Cat. No. IHC-00002) used at a dilution of 1:250. *Detection:* DAB