

53BP1 IHC Antibody

Rabbit Polyclonal

Antigen Affinity Purified

Protein ID NP_005648.1

Catalog No. IHC-00001

GeneID 7158

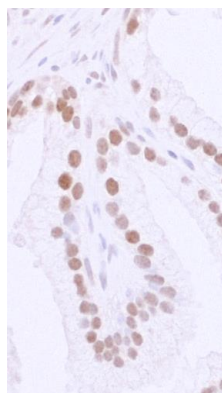
Lot No. IHC-00001-3



APPLICATIONS	IHC
SPECIES REACTIVITY	Human, Mouse
AMOUNT	100 µl
CONCENTRATION	100 µg/ml
STORAGE/SHELF LIFE	2 – 8° C / 1 year from date of receipt
PHYSICAL STATE	Liquid
BUFFER	Tris-buffered Saline containing 0.1% BSA and 0.09% Sodium Azide
ISOTYPE	IgG
ORIGIN	USA
PRODUCTION PROCEDURES	Antibody was affinity purified using an epitope specific to 53BP1 immobilized on solid support. The epitope recognized by IHC-00001 maps to a region between residue 350 and 400 of human tumor protein p53 binding protein 1 using the numbering given in entry NP_005648.1 (GeneID 7158).
APPLICATIONS	Centrifuge tube to remove product from lid. Optimal working dilutions should be determined experimentally by the investigator. Prepare working dilution immediately before use. Immunohistochemistry 1:100 – 1:500
APPLICATION NOTES	Epitope exposure is recommended. Epitope exposure with citrate buffer will enhance staining. Likely to work with frozen sections.
IHC HUMAN CONTROLS	In some cases, the antibody may be diluted further than indicated. Colon Carcinoma, Metastatic Lymph Node, Ovarian Carcinoma, Skin Squamous Cell Carcinoma
IHC MOUSE CONTROLS	Lung, Renal Cell Carcinoma, Squamous Cell Carcinoma, Testis
ADDITIONAL INFO	https://www.bethyl.com/product/IHC-00001 Use the link above to view SDS, a current list of citations, and other product specific information.

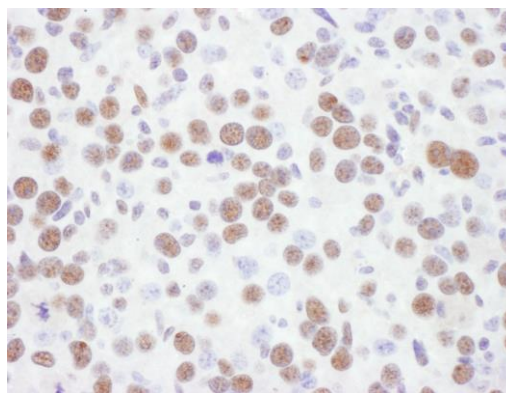
This document certifies that this product has met all of the quality control standards defined by Bethyl Laboratories, Inc.
Eric McIntush, PhD | Chief Scientific Officer

Date: June 21, 2019

**Detection of human 53BP1 by immunohistochemistry.**

Sample: FFPE section of human prostate carcinoma.

Antibody: Affinity purified rabbit anti-53BP1 (Cat. No. IHC-00001 Lot 3) used at a dilution of 1:250. *Detection:* DAB

**Detection of mouse 53BP1 by immunohistochemistry.**

Sample: FFPE section of mouse renal cell carcinoma.

Antibody: Affinity purified rabbit anti-53BP1 (Cat. No. IHC-00001 Lot2) used at a dilution of 1:250. *Detection:* DAB