



Human Gastric Cancer Primer Library

Catalog No: HGCPL-1
Supplier: RealTimePrimers
Lot No: XXXXX
Supplied as: solid
Stability: stable at room temperature

Description

Contains 88 primer sets directed against gastric cancer associated genes and 8 housekeeping gene primer sets. Provided in a 96-well microplate (20 ul - 10 uM). Perform up to 100 PCR arrays (based on 20 ul assay volume per reaction). Just add cDNA template and SYBR green master mix.

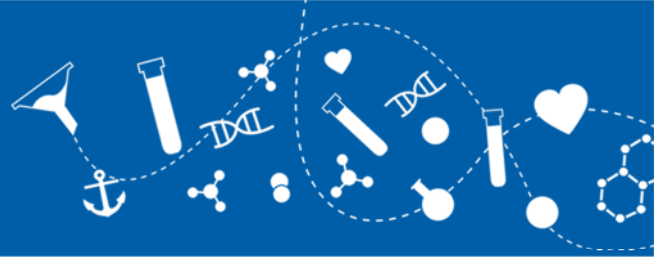
Gene List:

- ABCG2 ATP-binding cassette, sub-family G (WHITE), member 2 (Junior blood group)
- AKT1 v-akt murine thymoma viral oncogene homolog 1
- AKT2 v-akt murine thymoma viral oncogene homolog 2
- ALDH1A1 aldehyde dehydrogenase 1 family, member A1
- ARHGAP26 Rho GTPase activating protein 26
- ARID1A AT rich interactive domain 1A (SWI-like)
- BGN biglycan
- BMI1 BMI1 proto-oncogene, polycomb ring finger
- BYSL bystin-like
- CCNE1 cyclin E1
- CD274 CD274 molecule
- CD44 CD44 molecule (Indian blood group)
- CDH1 cadherin 1, type 1, E-cadherin (epithelial)
- CDKN2A cyclin-dependent kinase inhibitor 2A
- CLDN18 claudin 18
- CLRN3 clarin 3
- COL1A1 collagen, type I, alpha 1
- CTBP1 C-terminal binding protein 1
- CTNNA1 catenin (cadherin-associated protein), alpha 1, 102kDa
- CTNNB1 catenin (cadherin-associated protein), beta 1, 88kDa
- EFNA1 ephrin-A1
- ERBB2 erb-b2 receptor tyrosine kinase 2
- ERCC2 excision repair cross-complementation group 2
- FAT4 FAT atypical cadherin 4
- FGFR2 fibroblast growth factor receptor 2
- FNDC1 fibronectin type III domain containing 1
- FZD5 frizzled class receptor 5
- GATA6 GATA binding protein 6
- GKN2 gastroskin 2
- GSK3B glycogen synthase kinase 3 beta
- HGF hepatocyte growth factor (hepatopoietin A; scatter factor)
- HSF1 heat shock transcription factor 1
- IGFBP4 insulin-like growth factor binding protein 4
- IGFBP7 insulin-like growth factor binding protein 7
- IL6 interleukin 6
- INHBA inhibin, beta A
- IQGAP2 IQ motif containing GTPase activating protein 2
- JAK2 Janus kinase 2
- KLF5 Kruppel-like factor 5 (intestinal)
- KMT2C lysine (K)-specific methyltransferase 2C
- KRAS Kirsten rat sarcoma viral oncogene homolog
- LUM lumican
- MAP2K6 Mitogen-Activated Protein Kinase Kinase 6
- MDM2 MDM2 proto-oncogene, E3 ubiquitin protein ligase
- MELK maternal embryonic leucine zipper kinase
- MET MET proto-oncogene, receptor tyrosine kinase
- MGMT O-6-methylguanine-DNA methyltransferase
- MMP7 matrix metalloproteinase 7
- MT1X metallothionein 1X
- MYC V-Myc Avian Myelocytomatosis Viral Oncogene Homolog
- NCOA2 nuclear receptor coactivator 2
- NCOA3 nuclear receptor coactivator 3
- NEO1 neogenin 1
- NOTCH1 notch 1
- NOTCH2 notch 2
- OGG1 8-oxoguanine DNA glycosylase
- PDCD1LG2 programmed cell death 1 ligand 2
- PGC progastricsin (pepsinogen C)
- PIK3CA phosphatidylinositol-4,5-bisphosphate 3-kinase, catalytic subunit alpha
- PLA2G2A phospholipase A2, group IIA (platelets, synovial fluid)

CONTACT US TODAY

BIOMOL GmbH • Kieler Straße 303a • 22525 Hamburg • Germany • info@biomol.de • www.biomol.de

Fon: +49 (0)40-853 260 0 • TOLL FREE IN GERMANY: Fon: 0800-246 66 51



- PROM1 prominin 1
- PSAPL1 prosaposin-like 1 (gene/pseudogene)
- PSCA prostate stem cell antigen
- PTCH1 patched 1
- PTEN phosphatase and tensin homolog
- PTGS2 prostaglandin-endoperoxide synthase 2 (prostaglandin G/H synthase and cyclooxygenase)
- PTPN1 protein tyrosine phosphatase, nonreceptor type 1
- RABGEF1 RAB guanine nucleotide exchange factor (GEF) 1
- RAD21 RAD21 homolog (*S. pombe*)
- RHOA ras homolog family member A
- S100P S100 calcium binding protein P
- SFRP4 secreted frizzled-related protein 4
- SMAD4 SMAD family member 4
- SOD2 superoxide dismutase 2, mitochondrial
- SOX11 SRY (sex determining region Y)-box 11
- SPARC secreted protein, acidic, cysteine-rich (osteonectin)
- SPARC secreted protein, acidic, cysteine-rich (osteonectin)
- SPP1 secreted phosphoprotein 1
- SST somatostatin
- STAT3 signal transducer and activator of transcription 3 (acute-phase response factor)
- TERT telomerase reverse transcriptase
- TGFB1 transforming growth factor, beta 1
- TMEM184A transmembrane protein 184A
- TP53 tumor protein p53
- VEGFA vascular endothelial growth factor A
- WISP1 WNT1 inducible signaling pathway protein 1
- WNT5A wingless-type MMTV integration site family, member 5A
- XRCC1 X-ray repair complementing defective repair in Chinese hamster cells 1
- ACTB Actin, beta
- B2M Beta-2-microglobulin
- GAPDH Glyceraldehyde-3-phosphate dehydrogenase
- GUSB Glucuronidase, beta
- HPRT1 Hypoxanthine phosphoribosyltransferase 1
- PGK1 Phosphoglycerate kinase 1
- PPIA Peptidylprolyl isomerase A
- RPL13A Ribosomal protein L13a

Usage

This product is offered by Biomol for research purposes only. Not for diagnostic purposes or human use. It may not be resold or used to manufacture commercial products without written approval of Biomol GmbH.