



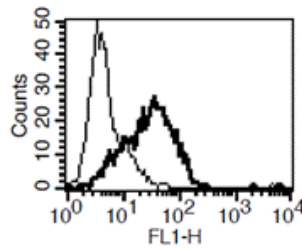
Diacclone

DIACLONE Immunology Products

Anti-Human TIM-3 Azide Free

Clone: B-K48

CATALOGUE N° :	857.860.000
CLONE :	B-K48
ISOTYPE :	IgG1 Kappa light chain
IMMUNISATION :	Recombinant Human TIM-3/Fc
HYBRIDOMA :	Myeloma X63/AG.8653 x Balb/c node cells
SPECIFICITY :	Recognise natural (both soluble and membrane forms) and recombinant human TIM-3
QUANTITY :	200 µg / 200 µl (Discovery Size also available please enquire)
FORMAT :	Phosphate-buffered saline. Sterile-filtered through 0.22 µm. Carrier and preservative free.
STORAGE :	Stable at +2-8°C for 12 months. For longer storage, freeze aliquots
APPLICATION :	Suitable for flow cytometry Suitable for ELISA



A typical staining pattern with the B-K48 monoclonal antibody of PHA activated lymphocytes

Version 2 - 08.17

For research use only

25 YEARS OF EXPERTISE

With over 25 years experience and extensive expertise we are committed to providing excellence in Monoclonal Antibody and immunoassay development.

The expanding range of Diacclone Immunology products is specifically designed to advance research applications.

Our experience and expertise coupled to the diversity of our product range makes Diacclone a clear choice to

Fast Track Your Research...

DIACLONE PRODUCTS



Monoclonal Antibodies



ELISA



ELISpot



DIAplex

DIACLONE SAS

6 rue Dr Jean-François-Xavier Girod
- BP 1985

25020 Besançon cedex - France

Tel: +33 (0)3 81 41 38 38

Fax: +33 (0)3 81 41 36 36

info@diacclone.com



www.diacclone.com