



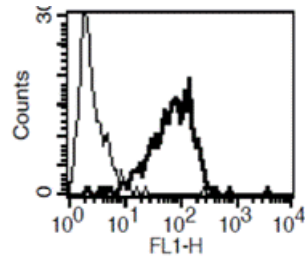
Diacclone

## DIACLONE Immunology Products

### Anti-Human EpCam Unconjugated

Clone: B-E54

<b>CATALOGUE N° :</b>	857.833.020
<b>CLONE :</b>	B-E54
<b>ISOTYPE :</b>	IgG1 Kappa light chain
<b>IMMUNISATION :</b>	Recombinant Human EpCam/Fc
<b>HYBRIDOMA :</b>	Myeloma X63/AG.8653 x Balb/c node cells
<b>SPECIFICITY :</b>	Recognise both natural and recombinant human EpCam
<b>QUANTITY :</b>	200 tests/2ml (Discovery Size also available please enquire)
<b>FORMAT :</b>	Phosphate-buffered saline with 1% BSA and 0.09% sodium azide
<b>WORKING DILUTION :</b>	Use 10 µl to label 106 cells or 100 µl of whole blood
<b>STORAGE :</b>	Stable at +2-8°C for 12 months. For longer storage, freeze aliquots.
<b>APPLICATION :</b>	Suitable for flow cytometry



A typical staining pattern with the B-E54 monoclonal antibody of HT29 cell line

☛ Sodium azide is a poisonous and hazardous substance, handle and dispose of properly

Version 2 - 08.17

For research use only

### 25 YEARS OF EXPERTISE

With over 25 years experience and extensive expertise we are committed to providing excellence in Monoclonal Antibody and Immunoassay development.

The expanding range of Diacclone Immunology products is specifically designed to advance research applications.

Our experience and expertise coupled to the diversity of our product range makes Diacclone a clear choice to

### Fast Track Your Research...

#### DIACLONE PRODUCTS



Monoclonal Antibodies



ELISA



ELISpot



DIAplex

#### DIACLONE SAS

6 rue Dr Jean-François-Xavier Girod  
- BP 1985

25020 Besançon cedex - France

Tel: +33 (0)3 81 41 38 38

Fax: +33 (0)3 81 41 36 36

info@diacclone.com



[www.diacclone.com](http://www.diacclone.com)