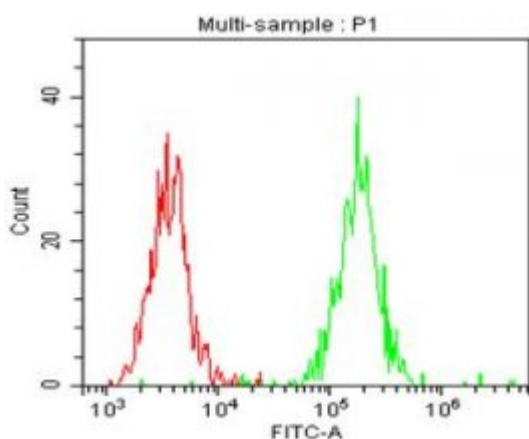


Anti-Human CD146 Unconjugated

PRODUCT SPECIFICATIONS

Catalogue N°	857.633.020 - 200 tests / 2ml
Target species	Human
Specificity	Recognizes both recombinant and natural human CD146
Clone	B-T46
Application	Flow Cytometry
Hybridoma	Myeloma X63/AG.8653 x Balb/c node cells
Immunisation	Recombinant human CD146
Quantity	200 Tests / 2ml (Discovery Size also available please enquire)
Isotype	Mouse IgG1 Kappa light chain
Format	Phosphate-buffered saline with 1% BSA and 0.09% sodium azide
Storage	Stable at +2-8°C for 12 months. DO NOT FREEZE.
Working Dilution	Use 10 µl to label 10 ⁶ cells or 100 µl of whole blood
Synonym	MCAM MUC18



A typical staining pattern of Nalm6 (B cells) with the B-T46 monoclonal antibody.
Red peak Isotope control
Green peak Labelled cells

Discover Diaclone

With over 30 years experience and extensive expertise, we are committed to providing excellence in Monoclonal Antibody and Immunoassay development.

The expanding range of Diaclone Immunology products is specifically designed to advance research applications.

Our experience and expertise coupled to the diversity and quality of our product range makes Diaclone a clear choice to :

Fast Track Your Research

Diaclone products



6 rue Dr Jean-François-Xavier Girod
BP 1985
25020 Besançon cedex
France

Tel : +33 (0)3 81 41 38 38
Fax : +33 (0)3 81 41 36 36

Email : Info@diaclone.com
www.diaclone.com

Sodium azide is a poisonous and hazardous substance, handle and dispose of properly

