

## Anti-Human CD146 Azide Free

### PRODUCT SPECIFICATIONS

<b>Catalogue N°</b>	857.630.000 - 200µg / 200µl 857.630.005 - 500µg / 500µl
<b>Target species</b>	Human
<b>Specificity</b>	Recognizes both recombinant and natural human CD146
<b>Clone</b>	B-T46
<b>Application</b>	Flow Cytometry Western Blot
<b>Hybridoma</b>	Myeloma X63/AG.8653 x Balb/c node cells
<b>Immunisation</b>	Recombinant human CD146
<b>Quantity</b>	200µg or 500µg (Discovery Size also available please enquire)
<b>Isotype</b>	Mouse IgG1 Kappa light chain
<b>Format</b>	Phosphate-buffered saline. Sterile-filtered through 0.22 µm. Carrier and preservative free
<b>Storage</b>	Stable at +2-8°C for 12 months. DO NOT FREEZE.
<b>Synonym</b>	MCAM MUC18

#### Discover Diaclone

With over 30 years experience and extensive expertise, we are committed to providing excellence in Monoclonal Antibody and Immunoassay development.

The expanding range of Diaclone Immunology products is specifically designed to advance research applications.

Our experience and expertise coupled to the diversity and quality of our product range makes Diaclone a clear choice to :

#### Fast Track Your Research

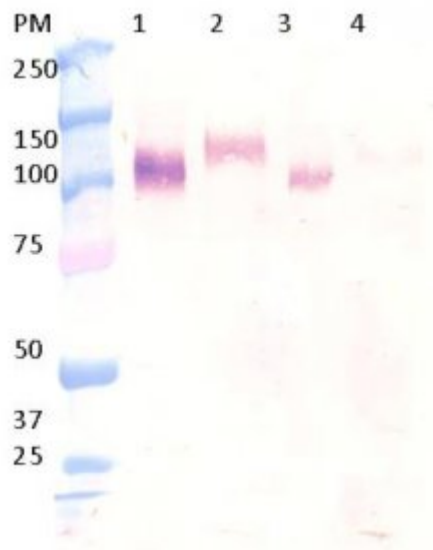
##### Diaclone products



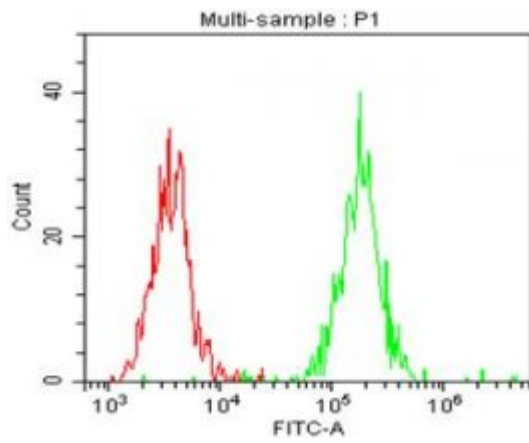
6 rue Dr Jean-François-Xavier Girod  
BP 1985  
25020 Besançon cedex  
France

Tel : +33 (0)3 81 41 38 38  
Fax : +33 (0)3 81 41 36 36

Email : [Info@diaclone.com](mailto:Info@diaclone.com)  
[www.diaclone.com](http://www.diaclone.com)



Western Blot with B-T46  
 1- Lysat Nalm6 **non-reduced**  
 2- Lysat Nalm6 **reduced**  
 3- Lysat CEM **non-reduced**  
 4- Lysat CEM **reduced**



A typical staining pattern of Nalm6 (B cells) with the B-T46 monoclonal antibody.  
 Red peak Isotope control  
 Green peak Labelled cells