

Anti-Human EpCam Azide Free

PRODUCT SPECIFICATIONS

Catalogue N°	857.626.000 - 200µg / 200µl 857.626.005 - 500µg / 500µl
Target species	Human
Specificity	Recognises both natural and recombinant human EpCam
Clone	B-P43
Application	ELISA Western Blot
Hybridoma	Myeloma X63/AG.8653 x Balb/c node cells
Immunisation	Recombinant Human EpCam/Fc
Quantity	200µg or 500µg (Discovery Size also available please enquire)
Isotype	Mouse IgG1 Kappa light chain
Format	Phosphate-buffered saline. Sterile-filtered through 0.22 µm. Carrier and preservative free
Storage	Stable at +2-8°C for 12 months. For longer storage freeze aliquots.
Synonym	CD326 TROP1

Discover Diaclone

With over 30 years experience and extensive expertise, we are committed to providing excellence in Monoclonal Antibody and Immunoassay development.

The expanding range of Diaclone Immunology products is specifically designed to advance research applications.

Our experience and expertise coupled to the diversity and quality of our product range makes Diaclone a clear choice to :

Fast Track Your Research

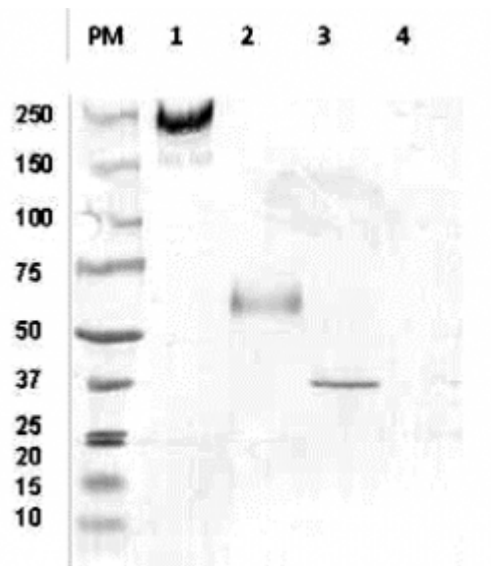
Diaclone products



6 rue Dr Jean-François-Xavier Girod
 BP 1985
 25020 Besançon cedex
 France

Tel : +33 (0)3 81 41 38 38
 Fax : +33 (0)3 81 41 36 36

Email : Info@diaclone.com
www.diaclone.com



Western Blot with B-P43

- 1: rh Epcam (non-reduced form)
- 2: rh Epcam (reduced form)
- 3: Lysat MCF7 (non-reduced form)
- 4: Lysat MCF7 (reduced form)