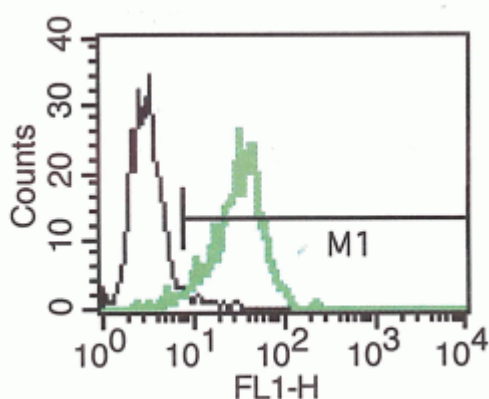


## Anti-Human L1CAM Unconjugated

### PRODUCT SPECIFICATIONS

|                  |   |
|------------------|---|
| Catalogue N°     | 857.323.020 - 200 tests / 2ml                                       |
| Target species   | Human   |
| Specificity      | Recognizes natural and recombinant human L1CAM                      |
| Clone            | B-L51   |
| Application      | Flow Cytometry  |
| Hybridoma        | Myeloma X63/AG.8653 x Balb/c node cells                             |
| Immunisation     | Recombinant human L1CAM/Fc  |
| Quantity         | 200 Tests / 2ml   |
| Isotype          | Mouse IgG1 Kappa light chain  |
| Format           | Phosphate buffered saline with 1 % BSA and 0.09 % sodium azide      |
| Storage          | Stable at +2-8°C for 12 months. For longer storage freeze aliquots. |
| Working Dilution | Use 10 µl to label 10 <sup>6</sup> cells or 100 µl of whole blood   |
| Synonym          | CD171<br>NCAM-L1  |



A typical staining pattern with B-L51 monoclonal antibody of HeLa cell line

#### Discover Diaclone

With over 30 years experience and extensive expertise, we are committed to providing excellence in Monoclonal Antibody and Immunoassay development.

The expanding range of Diaclone Immunology products is specifically designed to advance research applications.

Our experience and expertise coupled to the diversity and quality of our product range makes Diaclone a clear choice to :

#### Fast Track Your Research


##### Diaclone products



6 rue Dr Jean-François-Xavier Girod  
BP 1985  
25020 Besançon cedex  
France

Tel : +33 (0)3 81 41 38 38  
Fax : +33 (0)3 81 41 36 36

Email : [Info@diaclone.com](mailto:Info@diaclone.com)  
[www.diaclone.com](http://www.diaclone.com)

 Sodium azide is a poisonous and hazardous substance, handle and dispose of properly