



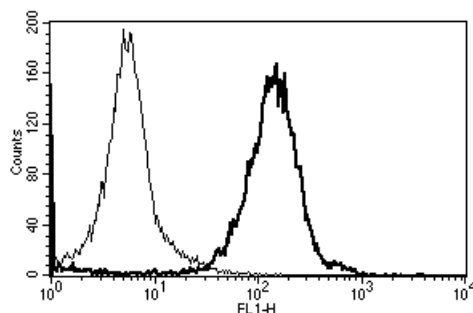
Diacclone

## DIACLONE Immunology Products

### Anti-Human HLA Class I Azide Free

Clone: W6/32

<b>CATALOGUE N° :</b>	857.220.000
<b>CLONE :</b>	W6/32
<b>ISOTYPE :</b>	Mouse IgG2a
<b>IMMUNISATION :</b>	Membrane of human tonsil cells
<b>HYBRIDOMA :</b>	Myeloma X63/AG.8653 x Balb/c spleen cells
<b>SPECIFICITY :</b>	Recognises an antigenic determinant shared among products of the HLA-A, -B and -C loci
<b>QUANTITY :</b>	200 µg / 200 µl
<b>FORMAT :</b>	Phosphate-buffered saline. Sterile-filtered through 0.22 µm. Carrier and preservative free
<b>STORAGE :</b>	Stable at +2-8°C for 12 months DO NOT FREEZE
<b>APPLICATION :</b>	Suitable for flow cytometry Blocks the interaction between T cells and MHC molecules Immunoprecipitation : not tested Western blot : not tested Immunohistochemistry : not tested



A typical staining pattern with the W6/32 monoclonal antibody of lymphocytes

Version 3 - 03.16

For research use only

### 25 YEARS OF EXPERTISE

With over 25 years experience and extensive expertise we are committed to providing excellence in Monoclonal Antibody and Immunoassay development.

The expanding range of Diacclone Immunology products is specifically designed to advance research applications.

Our experience and expertise coupled to the diversity of our product range makes Diacclone a clear choice to

### Fast Track Your Research...

#### DIACLONE PRODUCTS



Monoclonal Antibodies



ELISA



ELISpot



DIAplex

#### DIACLONE SAS

6 rue Dr Jean-François-Xavier Girod  
- BP 1985

25020 Besançon cedex - France

Tel: +33 (0)3 81 41 38 38

Fax: +33 (0)3 81 41 36 36

info@diacclone.com



[www.diacclone.com](http://www.diacclone.com)