



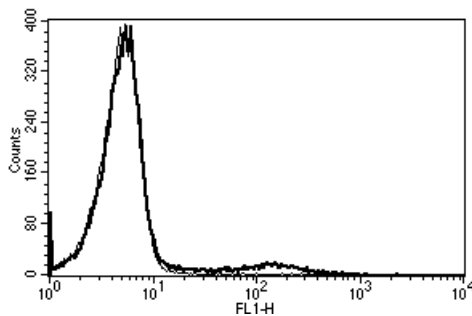
Diacclone

DIACLONE Immunology Products

Anti-Human HLA Class II (DR) Azide Free

Clone: B-F1

CATALOGUE N° :	857.030.000
CLONE :	B-F1
ISOTYPE :	Mouse IgG1
IMMUNISATION :	Chronic Lymphoid Leukaemia (CLL) cells
HYBRIDOMA :	Myeloma X63/AG.8653 x Balb/c spleen cells
SPECIFICITY :	Recognises a 28 kDa and 33 kDa protein
QUANTITY :	200 µg / 200 µl (Discovery Size also available please enquire)
FORMAT :	Phosphate-buffered saline. Sterile-filtered through 0.22 µm. Carrier and preservative free
STORAGE :	Stable at +2-8°C for 12 months For longer storage, freeze aliquots
APPLICATION :	Suitable for flow cytometry Biological activity : not tested Suitable for immunoprecipitation Western Blot : not tested Immunohistochemistry : not tested
REFERENCES :	Kap, Y.S. et al., Journal of Histochemistry & Cytochemistry, 2009;57(12):1159-1167



A typical staining pattern with the B-F1 monoclonal antibody of lymphocytes

Version 6 - 03.16

For research use only

25 YEARS OF EXPERTISE

With over 25 years experience and extensive expertise we are committed to providing excellence in Monoclonal Antibody and Immunoassay development.

The expanding range of Diacclone Immunology products is specifically designed to advance research applications.

Our experience and expertise coupled to the diversity of our product range makes Diacclone a clear choice to

Fast Track Your Research...

DIACLONE PRODUCTS



Monoclonal Antibodies



ELISA



ELISpot



DIAplex

DIACLONE SAS

6 rue Dr Jean-François-Xavier Girod
- BP 1985

25020 Besançon cedex - France

Tel: +33 (0)3 81 41 38 38

Fax: +33 (0)3 81 41 36 36

info@diacclone.com



www.diacclone.com