



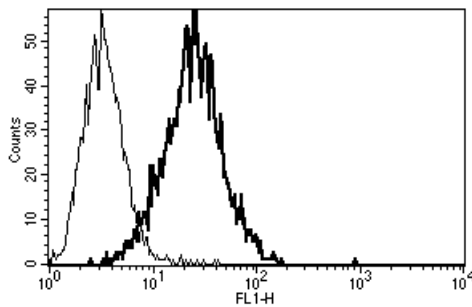
Diacclone

DIACLONE Immunology Products

Anti-Human CD112 Unconjugated

Clone: B-C12

CATALOGUE N° :	857.003.020
CLONE :	B-C12
ISOTYPE :	Mouse IgG2b
IMMUNISATION :	KG-1 cell line
HYBRIDOMA :	Myeloma X63/AG.8653 x Balb/c spleen cells
SPECIFICITY :	Recognises Nectin-2, the polio retrovirus receptor-2 (PRR2)
WORKSHOP :	VI - VII
QUANTITY :	200 tests / 2 ml (Discovery Size also available please enquire)
FORMAT :	Phosphate-buffered saline with 1 % BSA and 0.1 % sodium azide
WORKING DILUTION :	Use 10 µl to label 10 ⁶ cells or 100 µl of whole blood
STORAGE :	Stable at +2-8°C for 12 months For longer storage, freeze aliquots
APPLICATION :	Suitable for flow cytometry Immunoprecipitation : not tested Western blot : not tested Suitable for immunohistochemistry



A typical staining pattern with the B-C12 monoclonal antibody of KG1 cell line

☛ Sodium azide is a poisonous and hazardous substance, handle and dispose of properly

Version 3 - 03.16

For research use only

25 YEARS OF EXPERTISE

With over 25 years experience and extensive expertise we are committed to providing excellence in Monoclonal Antibody and Immunoassay development.

The expanding range of Diacclone Immunology products is specifically designed to advance research applications.

Our experience and expertise coupled to the diversity of our product range makes Diacclone a clear choice to

Fast Track Your Research...

DIACLONE PRODUCTS



Monoclonal Antibodies



ELISA



ELISpot



DIAplex

DIACLONE SAS

6 rue Dr Jean-François-Xavier Girod
- BP 1985

25020 Besançon cedex - France

Tel: +33 (0)3 81 41 38 38

Fax: +33 (0)3 81 41 36 36

info@diacclone.com



www.diacclone.com