



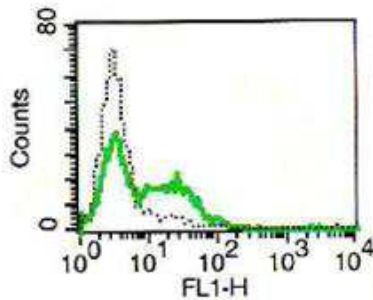
Diacclone

## DIACLONE Immunology Products

### Anti-Human CD161 Azide Free

Clone: B-D51

<b>CATALOGUE N° :</b>	855.820.000
<b>CLONE :</b>	B-D51
<b>ISOTYPE :</b>	Mouse IgG1 Kappa light chain
<b>IMMUNISATION :</b>	Recombinant human KLRB1
<b>HYBRIDOMA :</b>	Myeloma X63/AG.8653 x Balb/c node cells
<b>SPECIFICITY :</b>	Recognises CD161
<b>QUANTITY :</b>	200 µg / 200 µl (Discovery Size also available please enquire)
<b>FORMAT :</b>	Phosphate-buffered saline. Sterile-filtered through 0.22 µm. Carrier and preservative free
<b>STORAGE :</b>	Stable at +2-8°C for 12 months For longer storage, freeze aliquots
<b>APPLICATION :</b>	Suitable for flow cytometry



*A typical staining pattern of lymphocytes with the B-D51 monoclonal antibody*

Version 2 - 03.16

For research use only

### 25 YEARS OF EXPERTISE

With over 25 years experience and extensive expertise we are committed to providing excellence in Monoclonal Antibody and Immunoassay development.

The expanding range of Diacclone Immunology products is specifically designed to advance research applications.

Our experience and expertise coupled to the diversity of our product range makes Diacclone a clear choice to

### Fast Track Your Research...

#### DIACLONE PRODUCTS



Monoclonal Antibodies



ELISA



ELISpot



DIAPlex

#### DIACLONE SAS

6 rue Dr Jean-François-Xavier Girod  
- BP 1985

25020 Besançon cedex - France

Tel: +33 (0)3 81 41 38 38

Fax: +33 (0)3 81 41 36 36

info@diacclone.com



[www.diacclone.com](http://www.diacclone.com)