



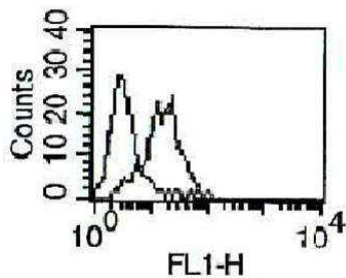
Diacclone

DIACLONE Immunology Products

Anti-Human MICA Unconjugated

Clone: B-Z26

| | |
|---------------------------|---|
| CATALOGUE N° : | 855.373.020 |
| CLONE : | B-Z26 |
| ISOTYPE : | Mouse IgG2a kappa light chain |
| IMMUNISATION : | Recombinant human MICA |
| HYBRIDOMA : | Myeloma X63/AG.8653 x Balb/c spleen cells |
| SPECIFICITY : | Recognises both natural and recombinant MICA |
| QUANTITY : | 200 tests / 2ml (Discovery Size also available please enquire) |
| FORMAT : | Phosphate-buffered saline with 1% BSA and 0.09% sodium azide |
| WORKING DILUTION : | Use 10 µl to label 10 ⁶ cells or 100 µl of whole blood |
| STORAGE : | Stable at +2-8°C for 12 months DO NOT FREEZE |
| APPLICATION : | Suitable for flow cytometry |



A typical staining pattern with the B-Z26 monoclonal antibody on U266 cell line

● Sodium azide is a poisonous and hazardous substance, handle and dispose of properly

Version 2 - 03.16

For research use only

25 YEARS OF EXPERTISE

With over 25 years experience and extensive expertise we are committed to providing excellence in Monoclonal Antibody and Immunoassay development.

The expanding range of Diacclone Immunology products is specifically designed to advance research applications.

Our experience and expertise coupled to the diversity of our product range makes Diacclone a clear choice to

Fast Track Your Research...

DIACLONE PRODUCTS



Monoclonal Antibodies



ELISA



ELISpot



DIAplex

DIACLONE SAS

6 rue Dr Jean-François-Xavier Girod
- BP 1985

25020 Besançon cedex - France

Tel: +33 (0)3 81 41 38 38

Fax: +33 (0)3 81 41 36 36

info@diacclone.com



www.diacclone.com