



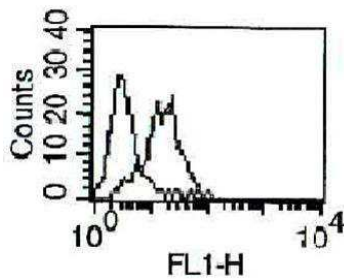
Diacclone

## DIACLONE Immunology Products

### Anti-Human MICA Azide Free

Clone: B-Z26

<b>CATALOGUE N° :</b>	855.370.000
<b>CLONE :</b>	B-Z26
<b>ISOTYPE :</b>	Mouse IgG2a kappa light chain
<b>IMMUNISATION :</b>	Recombinant human MICA
<b>HYBRIDOMA :</b>	Myeloma X63/AG.8653 x Balb/c spleen cells
<b>SPECIFICITY :</b>	Recognises both natural and recombinant MICA
<b>QUANTITY :</b>	200 µg / 200 µl (Discovery Size also available please enquire)
<b>FORMAT :</b>	Phosphate-buffered saline. Sterile-filtered through 0.22 µm. Carrier and preservative free
<b>STORAGE :</b>	Stable at +2-8°C for 12 months DO NOT FREEZE
<b>APPLICATION :</b>	Suitable for ELISA Suitable for flow cytometry



A typical staining pattern with the B-Z26 monoclonal antibody on U266 cell line

Version 4 - 03.16

For research use only

### 25 YEARS OF EXPERTISE

With over 25 years experience and extensive expertise we are committed to providing excellence in Monoclonal Antibody and Immunoassay development.

The expanding range of Diacclone Immunology products is specifically designed to advance research applications.

Our experience and expertise coupled to the diversity of our product range makes Diacclone a clear choice to

### Fast Track Your Research...

#### DIACLONE PRODUCTS



Monoclonal Antibodies



ELISA



ELISpot



DIAplex

#### DIACLONE SAS

6 rue Dr Jean-François-Xavier Girod  
- BP 1985

25020 Besançon cedex - France

Tel: +33 (0)3 81 41 38 38

Fax: +33 (0)3 81 41 36 36

info@diacclone.com



[www.diacclone.com](http://www.diacclone.com)