



Diacclone

## DIACLONE Immunology Products

### Anti-Human CD34 Class I Azide Free

Clone: B-G25

<b>CATALOGUE N° :</b>	854.240.000
<b>CLONE :</b>	B-G25
<b>ISOTYPE :</b>	Mouse IgG1
<b>IMMUNISATION :</b>	KG-1a cell line
<b>HYBRIDOMA :</b>	Myeloma X63/AG.8653 x Balb/c spleen cells
<b>SPECIFICITY :</b>	Recognises the Gp105-120 antigen, a 105-120 kDa protein
<b>WORKSHOP :</b>	VI
<b>QUANTITY :</b>	200 µg / 200 µl (Discovery Size also available please enquire)
<b>FORMAT :</b>	Phosphate-buffered saline. Sterile-filtered through 0.22 µm. Carrier and preservative free
<b>STORAGE :</b>	Stable at +2-8°C for 12 months For longer storage, freeze aliquots
<b>APPLICATION :</b>	Suitable for flow cytometry Triggers KG-1a cell aggregation Immunoprecipitation : not tested Western blot : not tested Immunohistochemistry : not tested
<b>OTHER :</b>	Ref : Nishio H. et al, MC7 Leucocyte Typing Workshop VI, Kobe (1996) Janes HM. et al, MC7.1 Leucocyte Typing Workshop VI, Kobe (1996) Canavo N. et al, MC7.2 Leucocyte Typing Workshop VI, Kobe (1996)

#### 25 YEARS OF EXPERTISE

With over 25 years experience and extensive expertise we are committed to providing excellence in Monoclonal Antibody and Immunoassay development.

The expanding range of Diacclone Immunology products is specifically designed to advance research applications.

Our experience and expertise coupled to the diversity of our product range makes Diacclone a clear choice to

#### Fast Track Your Research...

#### DIACLONE PRODUCTS



Monoclonal Antibodies



ELISA



ELISpot



DIAplex

#### DIACLONE SAS

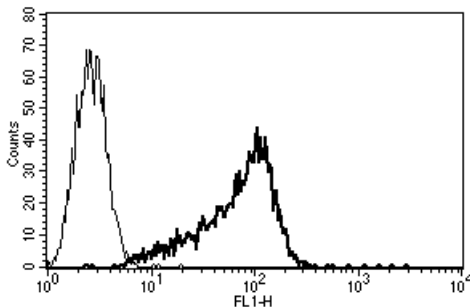
6 rue Dr Jean-François-Xavier Girod  
– BP 1985

25020 Besançon cedex – France

Tel: +33 (0)3 81 41 38 38

Fax: +33 (0)3 81 41 36 36

info@diacclone.com



A typical staining pattern with the B-G25 monoclonal antibody of KG-1a cell line

Version 4 - 03.16

For research use only



[www.diacclone.com](http://www.diacclone.com)