



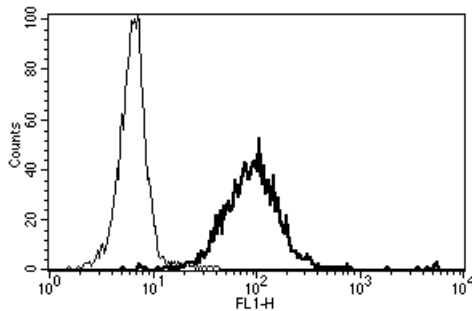
Diacclone

DIACLONE Immunology Products

Anti-Human CD10 Azide Free

Clone: B-E3

CATALOGUE N° :	854.090.000
CLONE :	B-E3
ISOTYPE :	Mouse IgG2a
IMMUNISATION :	Daudi and Raji cell lines
HYBRIDOMA :	Myeloma X63/AG.8653 x Balb/c spleen cells
SPECIFICITY :	Recognises the Common Acute Lymphoblastic Leukemia Antigen (CALLA), a 100 kDa protein
QUANTITY :	200 µg / 200 µl (Discovery Size also available please enquire)
FORMAT :	Phosphate-buffered saline. Sterile-filtered through 0.22 µm and treated to remove endotoxins. Carrier and preservative free
STORAGE :	Stable at +2-8°C for 12 months For longer storage, freeze aliquots
APPLICATION :	Suitable for flow cytometry Does not inhibit the Mixed Lymphocyte Culture Cytotoxic in association with the Rabbit Complement on CD10+ Cells Immunoprecipitation : not tested Western blot : not tested Suitable for immunohistochemistry (recommended dilution 1:50)
REFERENCES :	Geijtenbeek, T. B. et al., Blood, 1999; 94(2): 754-64. van den Berg, T. K. et al., J Immunol; 1996; 157(7): 3130-8.



A typical staining pattern with the B-E3 monoclonal antibody of granulocytes

Version 5 - 03.16

For research use only

25 YEARS OF EXPERTISE

With over 25 years experience and extensive expertise we are committed to providing excellence in Monoclonal Antibody and Immunoassay development.

The expanding range of Diacclone Immunology products is specifically designed to advance research applications.

Our experience and expertise coupled to the diversity of our product range makes Diacclone a clear choice to

Fast Track Your Research...

DIACLONE PRODUCTS



Monoclonal Antibodies



ELISA



ELISpot



DIAplex

DIACLONE SAS

6 rue Dr Jean-François-Xavier Girod
- BP 1985

25020 Besançon cedex - France

Tel: +33 (0)3 81 41 38 38

Fax: +33 (0)3 81 41 36 36

info@diacclone.com



www.diacclone.com