



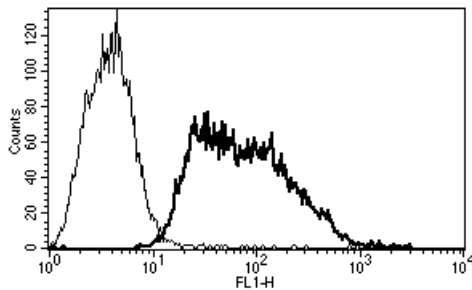
Diacclone

## DIACLONE Immunology Products

### Anti-Human CD62E Azide Free

Clone: B-P7

<b>CATALOGUE N° :</b>	852.730.000
<b>CLONE :</b>	B-P7
<b>ISOTYPE :</b>	Mouse IgG1
<b>IMMUNISATION :</b>	Activated human endothelial cells
<b>HYBRIDOMA :</b>	Myeloma X63/AG.8653 x Balb/c spleen cells
<b>SPECIFICITY :</b>	Recognises the Endothelial Leucocyte Adhesion Molecule-1 (ELAM-1), E-selectin, a 97 kDa protein
<b>WORKSHOP :</b>	VI
<b>QUANTITY :</b>	200 µg / 200 µl (Discovery Size also available please enquire)
<b>FORMAT :</b>	Phosphate-buffered saline. Sterile-filtered through 0.22 µm. Carrier and preservative free
<b>STORAGE :</b>	Stable at +2-8°C for 12 months For longer storage, freeze aliquots
<b>APPLICATION :</b>	Suitable for flow cytometry Biological activity : not tested Not suitable for immunoprecipitation Western blot : not tested Immunohistochemistry : not tested Recognises the soluble antigen
<b>OTHER :</b>	Ref : Vermot-Desroches C. et al, Immunology Letters. 48 : 1-9 (1995) Vermot-Desroches C. et al, AS22.1 Leucocyte Typing Workshop VI, Kobe (1996)



A typical staining pattern with the B-P7 monoclonal antibody of ELAM-1 transfected CHO cell line

Version 4 - 03.16

For research use only

### 25 YEARS OF EXPERTISE

With over 25 years experience and extensive expertise we are committed to providing excellence in Monoclonal Antibody and Immunoassay development.

The expanding range of Diacclone Immunology products is specifically designed to advance research applications.

Our experience and expertise coupled to the diversity of our product range makes Diacclone a clear choice to

### Fast Track Your Research...

#### DIACLONE PRODUCTS



Monoclonal Antibodies



ELISA



ELISpot



DIAplex

#### DIACLONE SAS

6 rue Dr Jean-François-Xavier Girod  
- BP 1985

25020 Besançon cedex - France

Tel: +33 (0)3 81 41 38 38

Fax: +33 (0)3 81 41 36 36

info@diacclone.com



[www.diacclone.com](http://www.diacclone.com)