



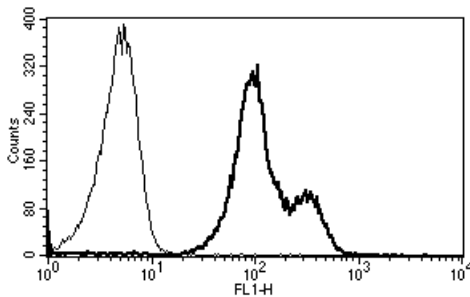
Diacclone

## DIACLONE Immunology Products

### Anti-Human CD11a Unconjugated

Clone: B-B15

<b>CATALOGUE N° :</b>	852.513.020
<b>CLONE :</b>	B-B15
<b>ISOTYPE :</b>	Mouse IgG1
<b>IMMUNISATION :</b>	Human PBL
<b>HYBRIDOMA :</b>	Myeloma X63/AG.8653 x Balb/c spleen cells
<b>SPECIFICITY :</b>	Recognises the $\alpha$ L integrin of LFA-1 complex, a 180 kDa protein
<b>QUANTITY :</b>	200 tests / 2 ml (Discovery Size also available please enquire)
<b>FORMAT :</b>	Phosphate-buffered saline with 1 % BSA and 0.09 % sodium azide
<b>WORKING DILUTION :</b>	Use 10 $\mu$ l to label 10 <sup>6</sup> cells or 100 $\mu$ l of whole blood
<b>STORAGE :</b>	Stable at +2-8°C for 12 months For longer storage, freeze aliquots
<b>APPLICATION :</b>	Suitable for flow cytometry Immunoprecipitation : not tested Western blot : not tested Immunohistochemistry : not tested



A typical staining pattern with the B-B15 monoclonal antibody of lymphocytes

●\* Sodium azide is a poisonous and hazardous substance, handle and dispose of properly

Version 6 - 03.16

For research use only

### 25 YEARS OF EXPERTISE

With over 25 years experience and extensive expertise we are committed to providing excellence in Monoclonal Antibody and Immunoassay development.

The expanding range of Diacclone Immunology products is specifically designed to advance research applications.

Our experience and expertise coupled to the diversity of our product range makes Diacclone a clear choice to

### Fast Track Your Research...

#### DIACLONE PRODUCTS



Monoclonal Antibodies



ELISA



ELISpot



DIAPlex

#### DIACLONE SAS

6 rue Dr Jean-François-Xavier Girod  
- BP 1985

25020 Besançon cedex - France

Tel: +33 (0)3 81 41 38 38

Fax: +33 (0)3 81 41 36 36

info@diacclone.com



[www.diacclone.com](http://www.diacclone.com)