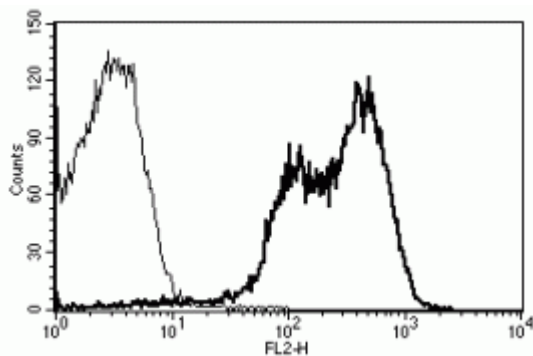


## Anti-Human CD11a PE Conjugated

### PRODUCT SPECIFICATIONS

<b>Catalogue N°</b>	852.512.010 - 100 tests / 1ml
<b>Target species</b>	Human
<b>Specificity</b>	Recognises the $\alpha$ L integrin of LFA-1 complex, a 180 kDa protein
<b>Clone</b>	B-B15
<b>Application</b>	Flow Cytometry
<b>Hybridoma</b>	Myeloma X63/AG.8653 x Balb/c spleen cells
<b>Immunisation</b>	Human PBL
<b>Quantity</b>	100 Tests / 1ml (Discovery Size also available please enquire)
<b>Isotype</b>	Mouse IgG1 Kappa light chain
<b>Format</b>	Phosphate-buffered saline with 1% BSA and 0.1% sodium azide
<b>Storage</b>	Stable at +2-8°C for six months after reconstitution. DO NOT FREEZE.
<b>Working Dilution</b>	Reconstitute with 1 ml deionised water. Use 10 $\mu$ l to label 10 <sup>6</sup> cells or 100 $\mu$ l of whole blood.
<b>Synonym</b>	LFA-1 Integrin $\alpha$ L



A typical staining pattern with the B-B15 monoclonal antibody of lymphocytes

#### Discover Diaclone

With over 30 years experience and extensive expertise, we are committed to providing excellence in Monoclonal Antibody and Immunoassay development.

The expanding range of Diaclone Immunology products is specifically designed to advance research applications.

Our experience and expertise coupled to the diversity and quality of our product range makes Diaclone a clear choice to :

#### Fast Track Your Research

##### Diaclone products




6 rue Dr Jean-François-Xavier Girod  
BP 1985  
25020 Besançon cedex  
France


Tel : +33 (0)3 81 41 38 38  
Fax : +33 (0)3 81 41 36 36


Email : [Info@diaclone.com](mailto:Info@diaclone.com)


[www.diaclone.com](http://www.diaclone.com)

# REFERENCES

Brok, H. P. et al., Cytometry,2001; 45(4): 294-303 - [Pubmed link](#) 

Canfield, S. M. and A. Y. Khakoo, J Immunol.,1999; 163(6): 3430-40. - [Pubmed link](#) 

Ohashi, Y. et al., Am J Physiol.,1997; 272(6 Pt 2): H2807-14. - [Pubmed link](#) 

 *Sodium azide is a poisonous and hazardous substance, handle and dispose of properly*

Version 6 - 02.18

For research use only