



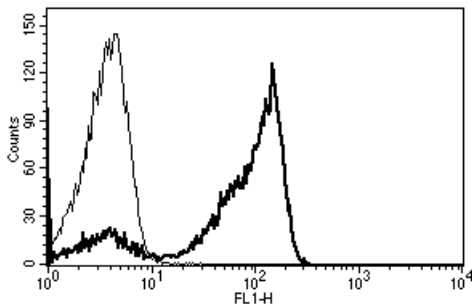
Diacclone

DIACLONE Immunology Products

Anti-Human CD2 Azide Free

Clone: B-E2

CATALOGUE N° :	852.500.000
CLONE :	B-E2
ISOTYPE :	Mouse IgG2b
IMMUNISATION :	Human thymocytes
HYBRIDOMA :	Myeloma X63/AG.8653 x Balb/c spleen cells
SPECIFICITY :	Recognises the Lymphocyte Function associated Antigen-2 (LFA-2), a 50 kDa protein
WORKSHOP :	V
QUANTITY :	200 µg / 200 µl (Discovery Size also available please enquire)
FORMAT :	Phosphate-buffered saline. Sterile-filtered through 0.22 µm and treated to remove endotoxins. Carrier and preservative free
STORAGE :	Stable at +2-8°C for 12 months For longer storage, freeze aliquots
APPLICATION :	Suitable for flow cytometry Inhibits Mixed Lymphocyte Culture Immunoprecipitation : not tested Western Blot : not tested Suitable for immunohistochemistry (recommended dilution 1:50)
REFERENCES :	Cavazzana-Calvo, M et al., Br J Haematol., 1996; 93(1): 131-8. Dupuis-Girod, S. et al., Pediatrics, 2006; 118(1): e205-11. Jabado, N. et al., Blood, 1997; 90(12): 4743-8. Jabado, N. et al., Pediatrics, 1996; 98(3 Pt 1): 420-8. Przepiorka, D. et al., Blood, 1998; 92(11): 4066-71. Racadot, E. et al., Bone Marrow Transplant, 1995; 15(5): 669-77. Tiberghien P. et al., Blood, 2001; 97 : 63 -72



A typical staining pattern with the B-E2 monoclonal antibody of lymphocytes

Version 5 - 03.16

For research use only

25 YEARS OF EXPERTISE

With over 25 years experience and extensive expertise we are committed to providing excellence in Monoclonal Antibody and Immunoassay development.

The expanding range of Diacclone Immunology products is specifically designed to advance research applications.

Our experience and expertise coupled to the diversity of our product range makes Diacclone a clear choice to

Fast Track Your Research...

DIACLONE PRODUCTS



Monoclonal Antibodies



ELISA



ELISpot



DIAplex

DIACLONE SAS

6 rue Dr Jean-François-Xavier Girod
- BP 1985

25020 Besançon cedex - France

Tel: +33 (0)3 81 41 38 38

Fax: +33 (0)3 81 41 36 36

info@diacclone.com



www.diacclone.com