



Diacclone

DIACLONE Immunology Products

Anti-Human CD130 Azide Free

Clone: B-S12

CATALOGUE N° :	852.110.000
CLONE :	B-S12
ISOTYPE :	Mouse IgG1
IMMUNISATION :	Natural soluble gp130
HYBRIDOMA :	Myeloma X63/AG.8653 x Balb/c spleen cells
SPECIFICITY :	Recognises the Gp130, common subunit for IL-6, IL-11, OSM, LIF, CNTF, CT-1 receptors, a 130-140 kDa protein
WORKSHOP :	VI
QUANTITY :	200 µg / 200 µl (Discovery Size also available please enquire)
FORMAT :	Phosphate-buffered saline. Sterile-filtered through 0.22 µm and treated to remove endotoxins. Carrier and preservative free
STORAGE :	Stable at +2-8°C for 12 months For longer storage, freeze aliquots
APPLICATION :	Suitable for flow cytometry Activates cells carrying gp130 Induces gp130 activation, Jak 1, Jak 2, Stat 1 and Stat 3 phosphorylation Suitable for immunoprecipitation and western blot Immunohistochemistry : not tested Recognises the soluble antigen
REFERENCES :	Althoff, K. et al., <i>Biochem J.</i> , 2001; 353(Pt 3): 663-72. Ancey, C. et al., <i>Cytokine</i> , 2002; 18(4): 199-205. Ancey, C. et al., <i>Cardiovasc Res.</i> , 2003; 59(1): 78-85. Autissier, P. et al., <i>Int Immunol.</i> , 1998; 10(12): 1881-9. Fourcin, M. et al., <i>J Biol Chem.</i> , 1996; 271(20): 11756-60. Giese B. et al., <i>J. Biol. Chem.</i> , 2003; 278(40): 39205 - 39213 Gu, Z. J. et al., <i>Leukemia</i> , 2000; 14(1): 188-97. Hammacher, A. et al., <i>J Biol Chem.</i> , 1998; 273(35): 22701-7. Hammacher, A. et al., <i>Biochem</i> , 2000; J 345 Pt 1: 25-32. Horsten, U. et al., <i>J Biol Chem.</i> , 1997; 272(38): 23748-57. Jover, R. et al., <i>Faseb J.</i> , 2002; 16(13): 1799-801. Kallen, K. J. et al., <i>J Biol Chem.</i> , 1999; 274(17): 11859-67. Kube D. et al., <i>Blood</i> , 2001; 98(3): 762 - 770 Kurth, I. et al., <i>J Immunol.</i> , 1999; 162(3): 1480-7. Kurth, I. et al., <i>J Immunol.</i> , 2000; 164(1): 273-82. Lebeau, B. et al., <i>FEBS Lett.</i> , 1997; 407(2): 141-7. Müller-Newen G. et al., <i>J. Biol. Chem.</i> , 2000; 275 (7) : 4578 - 4586 Olivier, C. et al., <i>J Biol Chem.</i> , 2000; 275(8): 5648-56. Pflanz, S. et al., <i>Biochem J.</i> , 2001; 356(Pt 2): 605-12. Puthier, D. et al., <i>Blood</i> , 1996; 88(12): 4659-66. Rebouissou C. et al., <i>Blood</i> , 1998; 91(12) : 4727 - 4737 Selander K.S. et al., <i>Cancer Res.</i> , 2004; 64(19): 6924 - 6933 Simpson, R. J. et al., <i>Protein Sci.</i> , 1997; 6(5): 929-55. Thiel, S. et al., <i>Biochem</i> , 1998; J 330 (Pt 1): 47-54. Voisin M-B. et al., <i>J. Biol. Chem.</i> , 2002; 277(16) : 13682 - 13692 Wang, Y. D. et al., <i>Int Immunol.</i> , 2002; 14(6): 599-603. Wijdenes J. et al., <i>Eur. J. Immunol.</i> , 1995; 25(12): 3474-81

25 YEARS OF EXPERTISE

With over 25 years experience and extensive expertise we are committed to providing excellence in Monoclonal Antibody and immunoassay development.

The expanding range of Diacclone Immunology products is specifically designed to advance research applications.

Our experience and expertise coupled to the diversity of our product range makes Diacclone a clear choice to

Fast Track Your Research...

DIACLONE PRODUCTS



Monoclonal Antibodies



ELISA



ELISpot



DIApex

DIACLONE SAS

6 rue Dr Jean-François-Xavier Girod
- BP 1985

25020 Besançon cedex - France

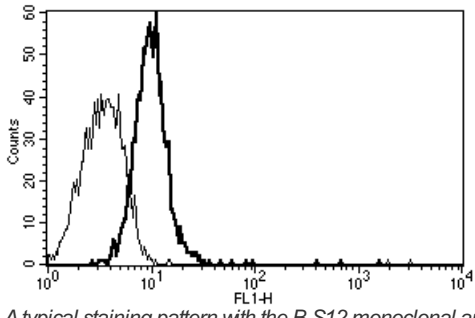
Tel: +33 (0)3 81 41 38 38

Fax: +33 (0)3 81 41 36 36

info@diacclone.com



www.diacclone.com



A typical staining pattern with the B-S12 monoclonal antibody of Eahy 926 cell line

Version 6 - 06.17

For research use only