



Diacclone

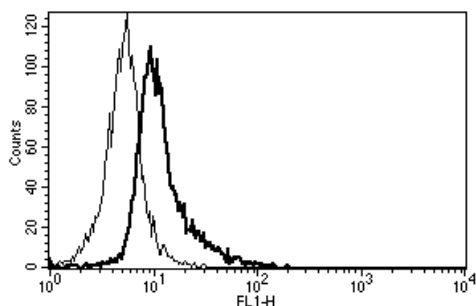
DIACLONE Immunology Products

Anti-Human CD130 Azide Free

Clone: B-R3

CATALOGUE N° :	852.060.000
CLONE :	B-R3
ISOTYPE :	Mouse IgG2a
IMMUNISATION :	Natural soluble gp130
HYBRIDOMA :	Myeloma X63/AG.8653 x Balb/c spleen cells
SPECIFICITY :	Recognises the Gp130, common subunit for IL-6, IL-11, OSM, LIF, CNTF, CT-1 receptors, a 130-140 kDa protein
WORKSHOP :	VI
QUANTITY :	200 µg / 200 µl (Discovery Size also available please enquire)
FORMAT :	Phosphate-buffered saline. Sterile-filtered through 0.22 µm and treated to remove endotoxins. Carrier and preservative free
STORAGE :	Stable at +2-8°C for 12 months For longer storage, freeze aliquots
APPLICATION :	Suitable for flow cytometry Inhibits IL-6, IL-11, CNTF, LIF and OSM activities Inhibits OSM and CNTF binding to gp130 Immunohistochemistry : not tested Recognises the soluble antigen

REFERENCES :	Aoki, Y. et al., Blood, 2001; 98(10): 3042-9. Auguste, P. et al., J Biol Chem., 1997; 272(25): 15760-4. Blanchard M et al., J. Biol. Chem., 1998; 273(33): 20886 -20893 Burger R. et al., The Haematology Journal, 2001; 2(1): 42-53 Burger, R. et al., Haematologica, 2017; 102(2) :381-390 Chautard, E. et al., Neuro Oncology, 2010; 12(5): 434-443 Chevalier S. et al., J. Biol. Chem., 1996; 271(25): 14764-72 Duplomb L. et al., Endocrinology, 2003; 144(12) : 5381 - 5389 Gougelet, A. et al., PLoS One, 2009; 4(11): e8026 Gu, Z. J. et al., Blood, 1996; 88(10): 3972-86. Gu, Z. J. et al., Leukemia, 2000; 14(1): 188-97. Gu, Z. J. et al., J Immunol Methods, 1996; 190(1): 21-7. Jover, R. et al., Faseb J., 2002; 16(13): 1799-801. Kube D. et al., Blood, 2001; 98(3) : 762 - 770 Lebeau, B. et al., FEBS Lett., 1997; 407(2): 141-7 Leslie, K. et al., Breast Cancer Res., 2010; 12(5): R80. Magrangeas, F. et al., Biochem J., 2001; 353(Pt 2): 223-30. Mèmoni, B., Nephrol. Dial. Transplant, 2001; 16(6): A184-186. Mèmoni, B. et al., J Am Soc Nephrol., 2005; 16(4): 1099-107. Müller-Newen G. et al., J. Biol. Chem., 2000; 275 (7) : 4578 - 4586 Olivier, C. et al., J Biol Chem., 2000; 275(8): 5648-56. Taupin J-L. et al., J. Biol. Chem., 2001; 276(51) : 47975 - 47981 Thiel, S. et al., Biochem., 1998; J 330 (Pt 1): 47-54. Waetzig, G. H. et al., J. Biol. Chem., 2010; 285(3): 1781-1789
---------------------	---



25 YEARS OF EXPERTISE

With over 25 years experience and extensive expertise we are committed to providing excellence in Monoclonal Antibody and immunoassay development.

The expanding range of Diacclone Immunology products is specifically designed to advance research applications.

Our experience and expertise coupled to the diversity of our product range makes Diacclone a clear choice to

Fast Track Your Research...

DIACLONE PRODUCTS



Monoclonal Antibodies



ELISA



ELISpot



DIApex

DIACLONE SAS

6 rue Dr Jean-François-Xavier Girod
- BP 1985
25020 Besançon cedex - France
Tel: +33 (0)3 81 41 38 38
Fax: +33 (0)3 81 41 36 36
info@diacclone.com



www.diacclone.com

A typical staining pattern with the B-R3 monoclonal antibody of Eahy 926 cell line

Version 9 - 06.17

For research use only