



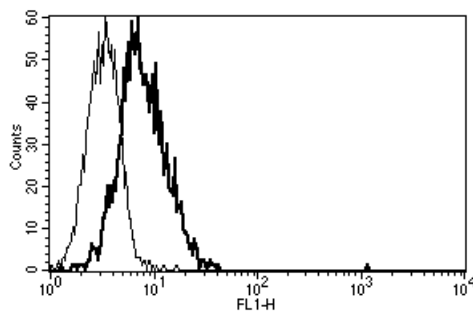
Diacclone

DIACLONE Immunology Products

Anti-Human CD126 Azide Free

Clone: B-N12

CATALOGUE N° :	852.050.000
CLONE :	B-N12
ISOTYPE :	Mouse IgG1
IMMUNISATION :	gp80 transfected CHO cell line
HYBRIDOMA :	Myeloma X63/AG.8653 x Balb/c spleen cells
SPECIFICITY :	Recognises the Interleukin-6 Receptor α subunit, IL-6 R α , IL-6 R, a 80 kDa protein
WORKSHOP :	V - VI
QUANTITY :	200 μ g / 200 μ l (Discovery Size also available please enquire)
FORMAT :	Phosphate-buffered saline. Sterile-filtered through 0.22 μ m. Carrier and preservative free
STORAGE :	Stable at +2-8°C for 12 months For longer storage, freeze aliquots
APPLICATION :	Suitable for flow cytometry No effect on IL-6 induced proliferation of XG-1 cell line Immunoprecipitation : not tested Western Blot : not tested Immunohistochemistry : not tested Recognises both soluble and membrane bound IL-6 R
OTHER :	Kd : 1.22 nM Blanchetot, C. et al., J. Biol. Chem., 2016 ; 291(26) : 13846-13854 Fischer, P. et al., Biochem J., 2004; 378(Pt 2) : 449-60 Kube D. et al., Blood, 2001; 98(3) : 762 - 770 Labbozetta, M. et al., Ann N Y Acad Sci., 2006; 1089: 268-75. Lebeau, B. et al., FEBS Lett., 1997; 407(2): 141-7. Mouthon, M. A. et al., Blood, 1994; 84(4): 1085-97. Muller-Newen, G. et al., Eur J Biochem., 1996; 236(3): 837-42. Van Roy, M. et al., Arthritis Res Ther., 2015; 17:135
REFERENCES :	



A typical staining pattern with the B-N12 monoclonal antibody of U266 cell line

Version 8 - 06.17

For research use only

25 YEARS OF EXPERTISE

With over 25 years experience and extensive expertise we are committed to providing excellence in Monoclonal Antibody and immunoassay development.

The expanding range of Diacclone Immunology products is specifically designed to advance research applications.

Our experience and expertise coupled to the diversity of our product range makes Diacclone a clear choice to

Fast Track Your Research...

DIACLONE PRODUCTS



Monoclonal Antibodies



ELISA



ELISpot



DIApex

DIACLONE SAS

6 rue Dr Jean-François-Xavier Girod
- BP 1985

25020 Besançon cedex - France

Tel: +33 (0)3 81 41 38 38

Fax: +33 (0)3 81 41 36 36

info@diacclone.com



www.diacclone.com