



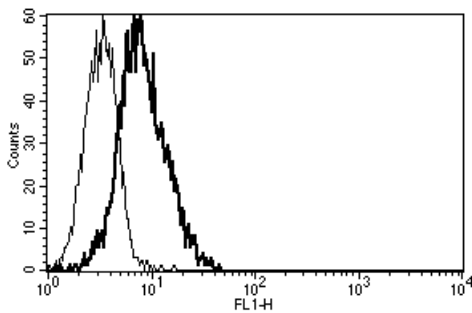
Diacclone

## DIACLONE Immunology Products

### Anti-Human CD126 Azide Free

Clone: B-F19

<b>CATALOGUE N° :</b>	852.040.000
<b>CLONE :</b>	B-F19
<b>ISOTYPE :</b>	Mouse IgG1
<b>IMMUNISATION :</b>	gp80 transfected CHO cell line
<b>HYBRIDOMA :</b>	Myeloma X63/AG.8653 x Balb/c spleen cells
<b>SPECIFICITY :</b>	Recognises the Interleukin-6 Receptor $\alpha$ subunit, IL-6 Ra, IL-6 R, a 80 kDa protein
<b>WORKSHOP :</b>	V- VI
<b>QUANTITY :</b>	200 $\mu$ g / 200 $\mu$ l (Discovery Size also available please enquire)
<b>FORMAT :</b>	Phosphate-buffered saline. Sterile-filtered through 0.22 $\mu$ m and treated to remove endotoxins. Carrier and preservative free
<b>STORAGE :</b>	Stable at +2-8°C for 12 months For longer storage, freeze aliquots
<b>APPLICATION :</b>	Suitable for flow cytometry Blocks IL-6 induced proliferation of XG-1 cell line Blocks IL-6 binding to its receptor Immunoprecipitation and wester blot : not tested Immunohistochemistry : not tested Recognises both soluble and membrane bound IL-6 R
<b>OTHER :</b>	Kd : 0.7 nM
<b>REFERENCES :</b>	Larregina, A T. et al., Immunology,1997; 91(2): 303-13. Mouthon, M A. et al., Blood,1994; 84(4): 1085-97.



A typical staining pattern with the B-F19 monoclonal antibody of U266 cell line

Version 4 - 03.16

For research use only

### 25 YEARS OF EXPERTISE

With over 25 years experience and extensive expertise we are committed to providing excellence in Monoclonal Antibody and Immunoassay development.

The expanding range of Diacclone Immunology products is specifically designed to advance research applications.

Our experience and expertise coupled to the diversity of our product range makes Diacclone a clear choice to

### Fast Track Your Research...

#### DIACLONE PRODUCTS



Monoclonal Antibodies



ELISA



ELISpot



DIAplex

#### DIACLONE SAS

6 rue Dr Jean-François-Xavier Girod  
- BP 1985

25020 Besançon cedex - France

Tel: +33 (0)3 81 41 38 38

Fax: +33 (0)3 81 41 36 36

info@diacclone.com



[www.diacclone.com](http://www.diacclone.com)