

SHEEP Gamma Globulin Fraction - D612-1000

Code: D612-1000

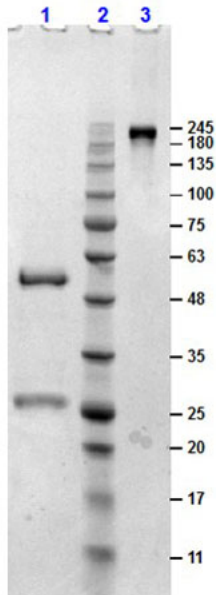
Size: 1 g

Product Description: SHEEP Gamma Globulin Fraction - D612-1000

Concentration: 1.25 grams of dry weight equals 1.0 gram of protein

PhysicalState: Lyophilized

Label	Unconjugated
Buffer	0.02 M Potassium Phosphate, 0.15 M Sodium Chloride, pH 7.2
Reconstitution Volume	100 mL
Reconstitution Buffer	Restore with deionized water (or equivalent)
Stabilizer	None
Preservative	0.01% (w/v) Sodium Azide
Storage Condition	Store vial at 4° C prior to restoration. For extended storage aliquot contents and freeze at -20° C or below. Avoid cycles of freezing and thawing. Centrifuge product if not completely clear after standing at room temperature. This product is stable for several weeks at 4° C as an undiluted liquid. Dilute only prior to immediate use.
Synonyms	Plasma Gamma Globulin, Serum Gamma Globulin, Globulin Fractions, Gammaglobulin, sheep gamma fraction
Application Note	Sheep Gamma Globulin Fraction can be utilized in Western Blotting and ELISA experiments.
Background	Sheep Gamma Globulin Fraction consists of the fraction of blood serum which contains whole antibodies as well as other non-albumin plasma proteins. Gamma globulins can be utilized therapeutically to temporarily boost an patient's immunity (such as after an immunosuppressive infection) or to increase the likelihood of kidney transplant acceptance. Gamma Globulin Fraction can be utilized in molecular biology experiments as a control reagent.
Purity And Specificity	This product was prepared from normal Sheep serum by a multi-step process which includes delipidation and salt fractionation followed by extensive dialysis against the buffer stated above. Assay by immunoelectrophoresis resulted in precipitin arcs against anti-Sheep Serum corresponding to gamma globulins.
Expiration	Expiration date is one (1) year from date of opening.
Related Products	
	200-301-268 Anti-AKT pS473 (MOUSE) Monoclonal Antibody - 200-301-268
	610-4302 Anti-MOUSE IgG (H&L) (RABBIT) Antibody Peroxidase Conjugated - 610-4302
	611-1302 Anti-RABBIT IgG (H&L) (GOAT) Antibody Peroxidase Conjugated - 611-1302
	B304 NORMAL GOAT SERUM (NGS) - B304
Images	
	1 SDS-PAGE results of Sheep Gamma Globulin.Lane 1: reduced Sheep Gamma Globulin.Lane 2: Opal PreStained Molecular Weight Ladder (p/n MB-210-0500).Lane 3: non-reduced Sheep Gamma Globulin.Load: 1.0µg.4-20% SDS Gel, Coomassie Blue Stained.



Disclaimer

This product is for research use only and is not intended for therapeutic or diagnostic applications. Please contact a technical service representative for more information. All products of animal origin manufactured by Rockland Immunochemicals are derived from starting materials of North American origin. Collection was performed in United States Department of Agriculture (USDA) inspected facilities and all materials have been inspected and certified to be free of disease and suitable for exportation. All properties listed are typical characteristics and are not specifications. All suggestions and data are offered in good faith but without guarantee as conditions and methods of use of our products are beyond our control. All claims must be made within 30 days following the date of delivery. The prospective user must determine the suitability of our materials before adopting them on a commercial scale. Suggested uses of our products are not recommendations to use our products in violation of any patent or as a license under any patent of Rockland Immunochemicals, Inc. If you require a commercial license to use this material and do not have one, then return this material, unopened to: Rockland Inc., P.O. BOX 5199, Limerick, Pennsylvania, USA.