

**MOUSE Gamma Globulin Fraction - D609-0100**
**Code:** D609-0100

**Size:** 100 mg

**Product Description:** MOUSE Gamma Globulin Fraction - D609-0100

**Concentration:** 20.0 mg/mL by UV absorbance at 280 nm

**PhysicalState:** Lyophilized

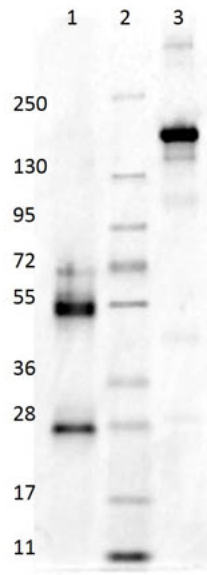
<b>Label</b>	Unconjugated
<b>Buffer</b>	0.02 M Potassium Phosphate, 0.15 M Sodium Chloride, pH 7.2
<b>Reconstitution Volume</b>	5.0 mL
<b>Reconstitution Buffer</b>	Restore with deionized water (or equivalent)
<b>Stabilizer</b>	None
<b>Preservative</b>	0.01% (w/v) Sodium Azide
<b>Storage Condition</b>	Store gamma globulin at 4° C prior to restoration. For extended storage aliquot contents and freeze at -20° C or below. Avoid cycles of freezing and thawing. Centrifuge product if not completely clear after standing at room temperature. This product is stable for several weeks at 4° C as an undiluted liquid. Dilute only prior to immediate use.
<b>Synonyms</b>	Mouse -globulin, Plasma Gamma Globulin, Serum Gamma Globulin, Globulin Fractions, Gammaglobulin, mouse gamma fraction
<b>Application Note</b>	Mouse gamma globulin blocking reagent is an ideal blocker for western blotting, ELISA, Immunohistochemistry and other detection assays.
<b>Background</b>	Gamma globulins are a class of globulins, identified by their position after serum protein electrophoresis. The most significant gamma globulins are immunoglobulins ("Igs"), more commonly known as antibodies, although some Igs are not gamma globulins, and some gamma globulins are not Igs. Globulin is one of the three main types of serum proteins, the others being albumin and fibrinogen. Some globulins are produced in the liver, while others are made by the immune system.
<b>Purity And Specificity</b>	Mouse Gamma Globulin was prepared from normal Mouse serum by a multi-step process which includes delipidation and salt fractionation followed by extensive dialysis against the buffer stated above. Assay by immunoelectrophoresis resulted in precipitin arcs against anti-Mouse Serum corresponding to gamma globulins.
<b>ELISA</b>	User Optimized
<b>Western Blot</b>	User Optimized
<b>Immunohistochemistry</b>	User Optimized
<b>Expiration</b>	Expiration date is one (1) year from date of opening.

**Related Products**

D600-0100	BOVINE Gamma Globulin Fraction - D600-0100
D602-0100	CHICKEN Gamma Globulin Fraction - D602-0100
D604-1000	GOAT Gamma Globulin Fraction - D604-1000
D608-0100	HUMAN Gamma Globulin Fraction - D608-0100

**Images**

1	SDS-Page of MOUSE Gamma Globulin Fraction. Lane 1: Mouse Gamma Globulin Reduced. Lane 2: Molecular Weight Marker. Lane 3: Mouse Gamma Globulin Non-Reduced. Load: 1.0 µg per lane. Predicted/Observed size-Reduced: 55 and 28 kDa. Predicted/Observed size-Non-Reduced: 160 kDa.
---	----------------------------------------------------------------------------------------------------------------------------------------------------------------------------------------------------------------------------------------------------------------------------------



### Disclaimer

This product is for research use only and is not intended for therapeutic or diagnostic applications. Please contact a technical service representative for more information. All products of animal origin manufactured by Rockland Immunochemicals are derived from starting materials of North American origin. Collection was performed in United States Department of Agriculture (USDA) inspected facilities and all materials have been inspected and certified to be free of disease and suitable for exportation. All properties listed are typical characteristics and are not specifications. All suggestions and data are offered in good faith but without guarantee as conditions and methods of use of our products are beyond our control. All claims must be made within 30 days following the date of delivery. The prospective user must determine the suitability of our materials before adopting them on a commercial scale. Suggested uses of our products are not recommendations to use our products in violation of any patent or as a license under any patent of Rockland Immunochemicals, Inc. If you require a commercial license to use this material and do not have one, then return this material, unopened to: Rockland Inc., P.O. BOX 5199, Limerick, Pennsylvania, USA.