

BOVINE/CALF PLASMA (sterile) in Potassium EDTA - D500-05-0100

Code: D500-05-0100

Size: 100 mL

Product Description: BOVINE/CALF PLASMA (sterile) in Potassium EDTA - D500-05-0100

Concentration: 76 mg/mL by Refractometry

PhysicalState: Liquid (sterile filtered)

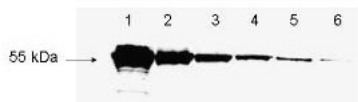
Label	Unconjugated
Stabilizer	None
Preservative	None
Storage Condition	Store container at -20° C prior to opening. Avoid cycles of freezing and thawing. Use aseptic technique to maintain sterility when opening product.
Synonyms	bovine plasma in Potassium EDTA, sterile plasma from bovine with anticoagulant Potassium EDTA, sterile bovine plasma
Application Note	pH: normalImmuno-electrophoresis: normalHemoglobin: normalIgG Concentration: normal
Assay Dilutions	User Optimized
Other Assays	User Optimized
Expiration	Expiration date is one (1) year from date of opening.
Sex	Mixed
Strain	Bovine/Calf - Mixed
Anti-Coagulant	Potassium EDTA
Sterilization	This product was aseptically filtered through a Millipore 0.22 micron filter into clean, pre-sterilized containers. The product was tested on trypticase soy agar for 24 hours, 48 hours and 72 hours and was found to be negative for bacteria.

Related Products

200-301-268	Anti-AKT pS473 (MOUSE) Monoclonal Antibody - 200-301-268
610-4302	Anti-MOUSE IgG (H&L) (RABBIT) Antibody Peroxidase Conjugated - 610-4302
611-1302	Anti-RABBIT IgG (H&L) (GOAT) Antibody Peroxidase Conjugated - 611-1302
B304	NORMAL GOAT SERUM (NGS) - B304

Images

1



2

1

2

150

100

80

60

50

40

30

20



Disclaimer

This product is for research use only and is not intended for therapeutic or diagnostic applications. Please contact a technical service representative for more information. All products of animal origin manufactured by Rockland Immunochemicals are derived from starting materials of North American origin. Collection was performed in United States Department of Agriculture (USDA) inspected facilities and all materials have been inspected and certified to be free of disease and suitable for exportation. All properties listed are typical characteristics and are not specifications. All suggestions and data are offered in good faith but without guarantee as conditions and methods of use of our products are beyond our control. All claims must be made within 30 days following the date of delivery. The prospective user must determine the suitability of our materials before adopting them on a commercial scale. Suggested uses of our products are not recommendations to use our products in violation of any patent or as a license under any patent of Rockland Immunochemicals, Inc. If you require a commercial license to use this material and do not have one, then return this material, unopened to: Rockland Inc., P.O. BOX 5199, Limerick, Pennsylvania, USA.