

**BOVINE/CALF PLASMA (sterile) in Sodium Citrate - D500-03-0050**

**Code:** D500-03-0050

**Size:** 50 mL

**Product Description:** BOVINE/CALF PLASMA (sterile) in Sodium Citrate - D500-03-0050

**Concentration:** 75.0mg/ml by Refractometry

**PhysicalState:** Liquid (sterile filtered)

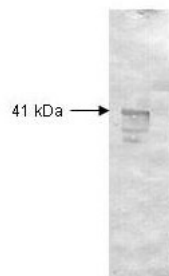
<b>Label</b>	Unconjugated
<b>Buffer</b>	None
<b>Stabilizer</b>	None
<b>Preservative</b>	None
<b>Storage Condition</b>	Store container at -20° C prior to opening. Avoid cycles of freezing and thawing. Use aseptic technique to maintain sterility when opening product.
<b>Synonyms</b>	bovine plasma in Sodium Citrate, sterile plasma from bovine with anticoagulant Sodium Citrate, sterile bovine plasma
<b>Application Note</b>	pH: normalImmuno-electrophoresis: normalHemoglobin: normalIgG Concentration: normal
<b>Expiration</b>	Expiration date is one (1) year from date of opening.
<b>Sex</b>	Mixed
<b>Strain</b>	Bovine/Calf - Mixed
<b>Anti-Coagulant</b>	Sodium Citrate
<b>Sterilization</b>	This product was aseptically filtered through a Millipore 0.22 micron filter into clean, pre-sterilized containers. The product was tested on trypticase soy agar for 24 hours, 48 hours and 72 hours and was found to be negative for bacteria.

**Related Products**

200-301-268	Anti-AKT pS473 (MOUSE) Monoclonal Antibody - 200-301-268
610-4302	Anti-MOUSE IgG (H&L) (RABBIT) Antibody Peroxidase Conjugated - 610-4302
611-1302	Anti-RABBIT IgG (H&L) (GOAT) Antibody Peroxidase Conjugated - 611-1302
B304	NORMAL GOAT SERUM (NGS) - B304

**Images**

- 1 Both the antiserum and IgG fractions of anti-Dextranase (Penicillium) are shown to detect under reducing conditions of SDS-PAGE the 41,000 dalton enzyme in cellular extracts. Approximately 10 ug of total protein is loaded per lane. A 1:2,000 dilution of the primary antibody is used followed by detection using HRP Goat-a-Rabbit IgG [H&L] (611-1302) diluted 1:4,000 and color development using 4-CN substrate until sufficient color develops. Other detection systems will yield similar results.



This product is for research use only and is not intended for therapeutic or diagnostic applications. Please contact a technical service representative for more information. All products of animal origin manufactured by Rockland Immunochemicals are derived from starting materials of North American origin. Collection was performed in United States Department of Agriculture (USDA) inspected facilities and all materials have been inspected and certified to be free of disease and suitable for exportation. All properties listed are typical characteristics and are not specifications. All suggestions and data are offered in good faith but without guarantee as conditions and methods of use of our products are beyond our control. All claims must be made within 30 days following the date of delivery. The prospective user must determine the suitability of our materials before adopting them on a commercial scale. Suggested uses of our products are not recommendations to use our products in violation of any patent or as a license under any patent of Rockland Immunochemicals, Inc. If you require a commercial license to use this material and do not have one, then return this material, unopened to: Rockland Inc., P.O. BOX 5199, Limerick, Pennsylvania, USA.