

RAT PLASMA (non-sterile) in Sodium Heparin - D410-06-0050

Code: D410-06-0050

Size: 50 mL

Product Description: RAT PLASMA (non-sterile) in Sodium Heparin - D410-06-0050

Concentration: 90 mg/mL by Refractometry

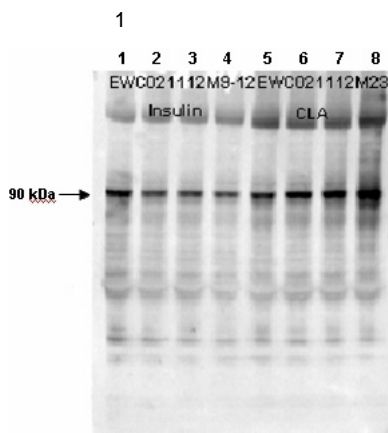
PhysicalState: Liquid

Label	Unconjugated
Stabilizer	None
Preservative	None
Storage Condition	Store container at -20° C prior to opening. Avoid cycles of freezing and thawing.
Synonyms	rat plasma in Sodium Heparin, non-sterile plasma from rat with anticoagulant Sodium Heparin, non-sterile rat plasma
Application Note	pH: normalImmuno-electrophoresis: normalHemoglobin: normalIgG Concentration: normal
Expiration	Expiration date is one (1) year from date of opening.
Sex	Mixed
Strain	Rat - Mixed
Anti-Coagulant	Sodium Heparin
Sterilization	Not performed.

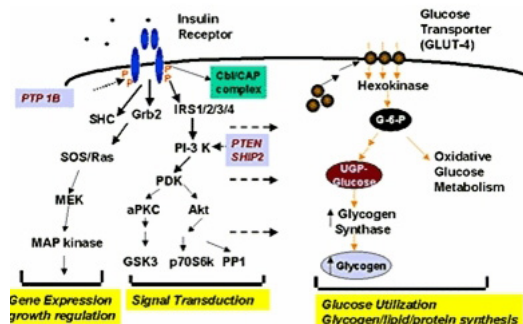
Related Products

200-301-268	Anti-AKT pS473 (MOUSE) Monoclonal Antibody - 200-301-268
610-4302	Anti-MOUSE IgG (H&L) (RABBIT) Antibody Peroxidase Conjugated - 610-4302
611-1302	Anti-RABBIT IgG (H&L) (GOAT) Antibody Peroxidase Conjugated - 611-1302
B304	NORMAL GOAT SERUM (NGS) - B304

Images



Affinity Purified Phospho-specific antibody to human muscle Glycogen Synthase (GS) at pS640 was used at a 1:1000 dilution to detect human muscle GS by western blot. Approximately 12 μ l of a mouse cardiac myocyte lysate was loaded per lane on a 4-20% Criterion gel for SDS-PAGE. Samples were either mock treated (lanes 1 and 5) or insulin treated at 10 nM, 100 nM and 1 μ M (lanes 2, 3 and 4 respectively) for 15' or CLA treated at 4nM, 20 nM or 100 nM (lanes 6,7 and 8 respectively) for 45'. After washing, a 1:5,000 dilution of HRP conjugated Gt-a-Rabbit IgG (611-103-122) preceded color development using Amersham's substrate system. Other detection methods will yield similar results.



Disclaimer

This product is for research use only and is not intended for therapeutic or diagnostic applications. Please contact a technical service representative for more information. All products of animal origin manufactured by Rockland Immunochemicals are derived from starting materials of North American origin. Collection was performed in United States Department of Agriculture (USDA) inspected facilities and all materials have been inspected and certified to be free of disease and suitable for exportation. All properties listed are typical characteristics and are not specifications. All suggestions and data are offered in good faith but without guarantee as conditions and methods of use of our products are beyond our control. All claims must be made within 30 days following the date of delivery. The prospective user must determine the suitability of our materials before adopting them on a commercial scale. Suggested uses of our products are not recommendations to use our products in violation of any patent or as a license under any patent of Rockland Immunochemicals, Inc. If you require a commercial license to use this material and do not have one, then return this material, unopened to: Rockland Inc., P.O. BOX 5199, Limerick, Pennsylvania, USA.