

# Mouse IgG–Fc Fragment Cross–Adsorbed Antibody

Goat Polyclonal Conjugate HRP

Antigen Affinity Purified

Catalog No. A90–231P

Lot No. 20

---

<b>APPLICATIONS</b>	WB, IHC, ICC, ELISA
<b>SPECIES REACTIVITY</b>	Mouse. Minimum reactivity to human and rat
<b>AMOUNT</b>	1 ml
<b>CONCENTRATION</b>	0.5 mg/ml
<b>STORAGE/SHELF LIFE</b>	2 – 8°C / 1 year from date of receipt
<b>PHYSICAL STATE</b>	Liquid
<b>BUFFER</b>	Phosphate Buffered Saline (PBS) containing 0.2% BSA and 0.05% Pro–Clean 400
<b>ISOTYPE</b>	IgG
<b>ORIGIN</b>	USA
<b>PRODUCTION PROCEDURES</b>	Antiserum was solid phase adsorbed to ensure class specificity. Antiserum was cross adsorbed using human and rat immunosorbents to remove cross reactive antibodies. The antibody to mouse IgG was isolated by affinity chromatography using antigen coupled to agarose beads and conjugated to horseradish peroxidase (HRP).

Immunoglobulin concentration was determined using Beer’s Law where 1 mg/mL IgG has an A280 of 1.4.

By immunoelectrophoresis and ELISA this antibody reacts specifically with mouse IgG. Cross reactivity with IgA and IgM is negligible. No antibody was detected against non–immunoglobulin serum proteins. Less than 1% cross reactivity to human and rat IgG was detected. This antibody may cross react with IgG from other species.

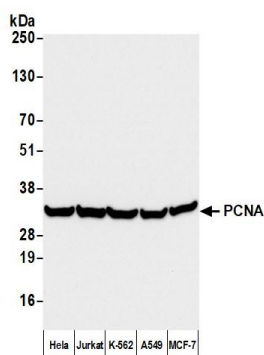
**APPLICATIONS** Centrifuge tube to remove product from lid. Optimal working dilutions should be determined experimentally by the investigator. Prepare working dilution immediately before use.

Western Blot	1:2,000 – 1:20,000
Immunohistochemistry	1:200 – 1:2,000
Immunocytochemistry	1:200 – 1:2,000
ELISA	1:10,000 – 1:100,000

**APPLICATION NOTES** Not all listed applications have been specifically tested by our laboratory.

**ADDITIONAL INFO** <https://www.fortislife.com/p/A90–231P>  
Use the link above to view SDS, a current list of citations, and other product specific information.

This document certifies that this product has met all of the quality control standards defined by Bethyl Laboratories, Inc.  
Michael Spencer, PhD Date: April 16, 2025



**Detection of human PCNA by western blot.** *Samples:* Whole cell lysate (50 µg) from HeLa, Jurkat, K-562, A549, and MCF-7 cells prepared using NETN lysis buffer. *Antibody:* Mouse anti-PCNA Monoclonal Antibody [PC10] (A500-024A) used for WB at 1:1000. *Secondary:* HRP-conjugated Goat anti-Mouse IgG-Fc Fragment Cross-Adsorbed Antibody (A90-231P). *Detection:* Chemiluminescence with an exposure time of 3 seconds.