

Mouse IgG–F(ab')₂ Fragment Antibody

F(ab')₂ Goat Polyclonal Conjugate HRP

Antigen Affinity Purified

Catalog No. A90–141P

Lot No. 16

APPLICATIONS	WB, IHC, ICC, ELISA
SPECIES REACTIVITY	Mouse
AMOUNT	1 ml
CONCENTRATION	0.5 mg/ml
STORAGE/SHELF LIFE	2 – 8°C / 1 year from date of receipt
PHYSICAL STATE	Liquid
BUFFER	Phosphate Buffered Saline (PBS) containing 0.2% BSA and 0.05% Pro–Clean 400
ISOTYPE	IgG
ORIGIN	USA

PRODUCTION PROCEDURES Antiserum was solid phase adsorbed to ensure class specificity. The antibody to mouse IgG was isolated by affinity chromatography using antigen coupled to agarose beads. F(ab')₂ fragments were generated using a pepsin digestion. Fc fragments and whole IgG molecules have been removed. Fragments were conjugated to horseradish peroxidase (HRP).

Immunoglobulin concentration was determined using Beer's Law where 1 mg/mL IgG has an A₂₈₀ of 1.4.

By immunoelectrophoresis and ELISA this antibody reacts specifically with Fab fragment of mouse IgG and with light chains common to other mouse immunoglobulins. No antibody was detected against non-immunoglobulin serum proteins. This antibody may cross react with Fab fragments from other species.

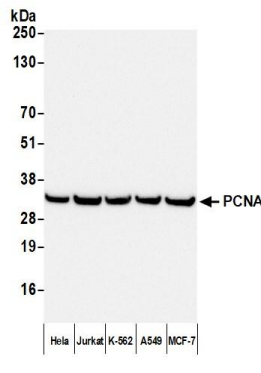
APPLICATIONS Centrifuge tube to remove product from lid. Optimal working dilutions should be determined experimentally by the investigator. Prepare working dilution immediately before use.

Western Blot	1:2,000 – 1:20,000
Immunohistochemistry	1:200 – 1:2,000
Immunocytochemistry	1:200 – 1:2,000
ELISA	1:10,000 – 1:50,000

APPLICATION NOTES Not all listed applications have been specifically tested by our laboratory.

ADDITIONAL INFO <https://www.fortislife.com/p/A90-141P>
Use the link above to view SDS, a current list of citations, and other product specific information.

This document certifies that this product has met all of the quality control standards defined by Bethyl Laboratories, Inc.
Michael Spencer, PhD Date: June 20, 2025



Detection of human PCNA by western blot with HRP-conjugated F(ab')₂ Goat anti-Mouse IgG-F(ab')₂ Fragment Antibody. *Samples:* Whole cell lysate (50 µg) from Hela, Jurkat, K-562, A549, and MCF-7 cells prepared using NETN lysis buffer. *Antibody:* Mouse anti-PCNA Monoclonal Antibody [PC10] (A500-024A) used for WB at 1:1000. *Secondary:* HRP-conjugated F(ab')₂ Goat anti-Mouse IgG-F(ab')₂ Fragment Antibody (A90-141P). *Detection:* Chemiluminescence with an exposure time of 30 seconds.